

MCF Fiscal Year 2022 Annual Report

Message from President and Executive Director

.....Page 3

Celebrating 45 Years

.....Page 5

Fiscal Year 2022: Year in Review

.....Page 11

Why We Do What We Do

.....Page 16

What's at Stake

.....Page 21

The Road to Preservation

.....Page 23

Preservation Highlights - Stivala Farm

.....Page 27

Preservation Highlights – A Focus on History

.....Page 30

Current Priorities – Preserving Land to Safeguard At-Risk Military Capabilities

.....Page 34

Current Priorities: Park Development

.....Page 38

MCF Fiscal Year 2022 Annual Report

Current Priorities: Diversity, Equity, and Inclusion

.....Page 45

In the Works

.....Page 47

Honor Roll of Donors

.....Page 50

Donor Impact Stories

.....Page 57

Focus on Finance

.....Page 60

What We're Proud Of

.....Page 62

Trustees and Staff

.....Page 66

Join Us

.....Page 69

MONMOUTH CONSERVATION FOUNDATION

FISCAL YEAR 2022 ANNUAL REPORT

July 1, 2021 – June 30, 2022

Photo by Scott Miller

MESSAGE FROM THE PRESIDENT AND EXECUTIVE DIRECTOR



Huber Woods Park. Photo by Scott Miller

Pulling together our annual report is always a meaningful exercise for the trustees and staff at Monmouth Conservation Foundation (MCF). As we sum up our progress over the course of our fiscal year, we realize the impact our partners and supporters have empowered us to make, and we are energized and inspired to keep persevering – with your continued support – in our fight to **#KeepMonmouthGreen**.

In 2022, MCF celebrated the **45th anniversary** of our founding by visionary leaders Judith Stanley Coleman and Michael Huber. To date, we have collaboratively preserved nearly **9,000 acres** in Monmouth County through our efforts to create parks, save open space, preserve farmland, safeguard waterways, and protect wildlife.

A mere **20,000 acres** of undeveloped, precious land remains across the County, and the urgency to protect them is increasing rapidly, as the competitive forces and challenges putting them at risk are intensifying. We are working hard to solidify partnerships and funding streams to save as much of the small percentage of land – **just 7%** - left in Monmouth County.

MCF is prioritizing park development, in particular in underserved communities; safeguarding at-risk natural habitat buffering sensitive military operations at Naval Weapons Station Earle; preserving the last remaining farmlands in our region; and focusing our efforts inwardly and outwardly through a new, important lens of diversity, equity, and inclusion (DEI).

The following report highlights our achievements, priorities, and projects in Fiscal Year 2022 (July 1, 2021 to June 30, 2022) and the many significant ones on the horizon and acknowledges those who help drive our mission forward.

Thank you for your interest and involvement!

Larry Fink William D. Kastning, AICP
President Executive Director

CELEBRATING 45 YEARS



Photo by Tina Colella Photography

2022 marked the 45th anniversary of MCF's founding in 1977. While the challenges we have faced relevant to preserving open space changed over time, our mission has remained steadfast: Creating Parks. Saving Open Space. Preserving Farmland. Teaching Environmental Sustainability. Safeguarding Waterways. Protecting Wildlife.



Creating Parks



Saving Open Space

Photo by Avery Brighton



Preserving Farmland

Photo by Fred Yahn, Eagle Drone Solutions, LLC



Teaching Environmental Sustainability

Photo by Jennifer Arnold



Safeguarding Waterways

Photo by Fred Yahn, Eagle Drone Solutions, LLC



Protecting Wildlife

Photo by Scott Miller

Our charitable work ensures a permanent legacy of open space and natural habitat throughout the county. As Monmouth's only county-wide land trust, we must contend with myriad **challenges**: Overdevelopment and Urban Sprawl. Balancing Affordable Housing Needs. Influx of Warehouses. Fragmentation of Wildlife Corridors. Barriers to Sustainable Farming and Farm Ownership Transfer. Increased Intensity and Frequency of Storms. Flooding. Sea Level Rise.

Overdevelopment and Urban Sprawl



Photo by Fred Yahn, Eagle Drone Solutions, LLC



Balancing Affordable Housing Needs



Influx of Warehouses

Photo by Fred Yahn, Eagle Drone Solutions, LLC

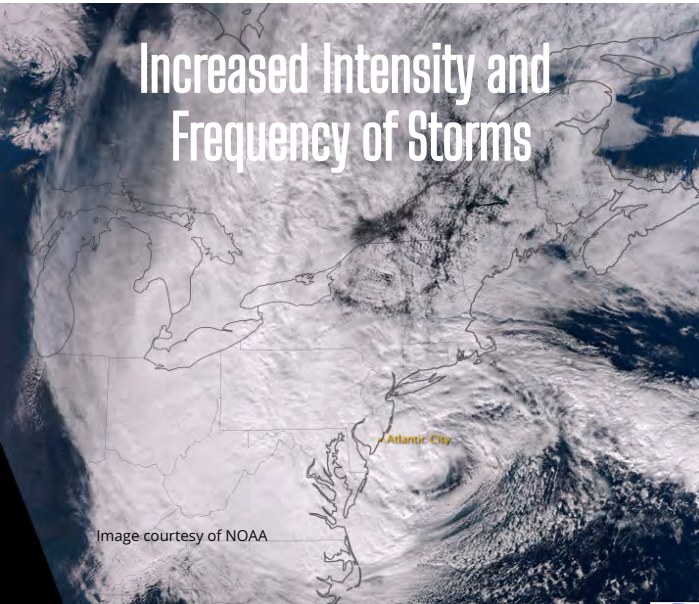


Photo by Fred Yahn, Eagle Drone Solutions, LLC

Fragmentation of Wildlife Corridors



Barriers to Sustainable Farming and Farm Ownership Transfer



Through funding support and collaborations with our local, state, and federal partners, bolstered by private philanthropy and grant contributions, MCF is powered to carry out our work and address these issues.

Fiscal Year 2022: Year in Review

Photo by DJ Glisson II, Firefly Imageworks

While we cannot cover every happening, here is a sampling of notable achievements and fundraising events celebrated by MCF from July 1, 2021 to June 30, 2022.



Photo by Fred Yahn, Eagle Drone Solutions, LLC



Photo by Angie Lambert Photography

July

After a pause due to the pandemic, we resumed our [Summer Run for Conservation](#) at a new location – the Bell Works Complex in Holmdel. MCF's original "foot race" began in Middletown in 1992 and has evolved to a family-friendly outdoor run/walk in support of MCF's work.

August

Phase One construction at [Sgt. George Ashby Memorial Park](#) took place, adding walkways and green infrastructure, funded by Monmouth County. Contributions from the County, MCF, and Allentown's municipal open space tax enabled the Borough of Allentown to purchase the 3-acre park in 2016.

September

Vicki and Bill Marraccini hosted MCF's [Fall for Conservation](#) signature fundraiser on the gorgeous grounds of their Dogwood Hills Farm in Locust. The event featured live music and a magician, cocktails and hors d'oeuvres, and an exclusive auction. Proceeds provide critical revenue to support MCF's operations.



October

We enjoyed the Perfect Autumn Day, hosting friends for a scenic drive along the [Upper Freehold Historic Farmland Byway](#) with stops including Downtown Allentown, Holland Ridge Farm, and Historic Walnford, followed by wine and entertainment at the Cream Ridge Winery on preserved farm and parkland. Events such as this bring new audiences to MCF and provide much-needed revenue to support our work.

November

MCF, in partnership with Holmdel's Citizens for Informed Land Use (CILU), led an educational campaign for Holmdel residents to vote on the proposal for an open space tax increase on the November 2021 ballot. The proposal passed favorably and will have lasting impacts on preservation and open space development in the region. (As a nonprofit, MCF does not receive direct proceeds from any open space tax collections.)

December

One of America's most accomplished business leaders, Monmouth County resident Andrea Jung gave an inspiring keynote at MCF's annual [Holiday Style Luncheon and Shopping Spree](#) fundraiser at The Shadowbrook at Shrewsbury, where guests shopped our diverse array of vendors. Proceeds provide discretionary funding to support MCF's operations like personnel and infrastructure.

Monmouth Conservation Foundation



January

2022 marked MCF's 45th anniversary working to preserve open space and **#KeepMonmouthGreen**, and we entered the year in a strong financial position despite COVID-19, thanks to our loyal supporters!

February

MCF received the appraisal on our first property to be preserved through our [new partnership](#) with the Navy and Monmouth County to permanently protect land that buffers Naval Weapons Station Earle. Doing so will limit the development of lands surrounding the Base, to ensure public safety, protect wildlife, and help sustain critical military mission capabilities at risk from climate change, storms, flooding, and wildfires.

March

Monmouth County, the Borough of Sea Bright, and MCF completed Phase One of [Shrewsbury Riverfront Park](#) construction in Sea Bright, with walking paths and open space, and tribute benches and bicycle racks thanks to generous sponsors, including one [special dedication](#).



Photo by Karen Keene



Photo by Tina Colella Photography



Photo by Fred Yahn, Eagle Drone Solutions, LLC

April

MCF received a \$10,000 anonymous grant through the National Philanthropic Trust to build a 1600-sq. ft. pollinator garden at Edgemere Park in Sea Girt in partnership with the Sea Girt Conservancy (to be completed in 2023).

May

Old and new friends came out in the rain for our annual [Spring for Conservation](#) family event at Bayonet Farm in Holmdel, featuring a barbecue, craft beer and wine, live music, wildlife encounters, and more!

June

We [preserved a 19-acre farm](#) in Colts Neck contiguous to an already-protected 63-acre farm, working with the State Agriculture Development Committee, Monmouth County, and Colts Neck Township.

WHY WE DO WHAT WE DO



The work we do to **#KeepMonmouthGreen** has lasting impacts on our public health, wellbeing, and overall sustainability.



Photo by Andrew Spencer on Unsplash

The health of our natural environment impacts the quality of the air we breathe, the water we drink, and the wellbeing of future generations.



Photo by Sue Fajgiel

Land preservation and the implementation of natural climate solutions protect ecosystems and combat the devastating effects of climate change like flooding, erosion, and damaging storms.



Photo by Jena Cosimo



Photo by Jena Cosimo



Photo by Caleb George on Unsplash



Photo by Tina Colella Photography

Saving farmland – what little is left – helps uphold our region’s pastoral character and agricultural roots; maintains fresh, healthy food sources; and supports local family farms.



Photo by Jena Cosimo

By protecting natural habitats and safeguarding waterways, we provide a haven for wildlife and plant life – including threatened and endangered species facing potential extinction.

The beloved monarch butterfly was recently declared endangered, largely due to habitat loss.



Photo by Jena Cosimo



Photo by Sue Fajgler

NJ may be called the Garden State, but our open spaces are more than just pretty landscapes. They increase property values, boost the economy, and offer a variety of health benefits.



Photo by Benjamin Davies on Unsplash



Photo by Tina Samaras

By exposing children to our natural world through educational programs we are planting the seeds of curiosity and a sense of wonder and instilling an appreciation for Mother Nature at a young age – fostering the future stewards of our land.



Photo by Michelangelo DeSantis

WHAT'S AT STAKE



Photos by Fred Yahn, Eagle Drone Solutions, LLC

Left: Aerial of preserved farm in Colts Neck, NJ that was slated for residential development. MCF, in partnership with Colts Neck Township, Monmouth County, and the NJ State Department of Agriculture saved this land from future development.

Right: Aerial of high-density housing development in Middletown, NJ.

Monmouth is the **sixth most populous county** in the most densely populated state in the nation – New Jersey. Overdevelopment and urban sprawl, increasing environmental pressures, and barriers to sustainable farming top the challenges we face when working to preserve land.

At risk are **20,000 acres** of undeveloped, precious land across the County. This acreage equates to twice the size of Manhattan. Only **7%** of Monmouth County's total land is left to be saved. We have no time to waste in pursuing the vital projects that will protect it.

In its most recent nationwide report in 2020, The American Farmland Trust ranked New Jersey as **#3** among states with the **most threatened agricultural land** but touted the state as **#1** in proactive policy responses to **farmland protection**.

There is **hope**, and together with our public agency partners, thoughtful landowners, community supporters, and our donors, MCF can preserve the land that remains. We hope you will join us.



Photo by Jennifer Arnold



THE ROAD TO PRESERVATION

Photo by Patrick Fore on Unsplash

As a land trust, MCF's objective is to facilitate how a property will be best preserved and utilized so the public-at-large benefits. We partner with local, state, and federal governments and liaise with landowners to enable the various steps in the land preservation process – ultimately leading to the preservation of land through fee acquisition or an easement. Each opportunity is unique and handled on a case-by-case basis.

MCF is a critical part of the equation, as we can act swiftly and impartially, free from government bureaucracy and political constraints. Our role is sometimes imperceptible in facilitating land preservation projects, while at other times we are the prominent driving force. In every instance, for land preservation to be successful, we must be supported by funding and through critical partnerships.



Photo by Jena Cosimo



The road to preservation is not direct, but more like a game of Chutes and Ladders™ with its steps forward and slides back; varied pace of each player; and different obstacles they face along the way. And the reality is, preserving a property can take years – even a decade or more – from the first conversation with the landowner. MCF serves a valuable role in this regard, maintaining longstanding relationships with landowners and municipal collaborators throughout Monmouth County.

The road to preservation entails a great deal of negotiation and paperwork. Steps are achieved in varying order across projects, and must address a range of considerations and details for the property, including:

- Alignment with MCF mission
- Public benefit(s)
- Impact(s) of Preservation
- Property characteristics
 - Conservation, agricultural, recreational, educational /or historical
 - Proximity to already preserved property
- Landowner goal(s)
- Preservation method
- Acquisition costs
- Monitoring/Stewardship requirements
- Timeline
- Willing partner(s)
 - Alignment with municipal and/or public agency goals
 - Stakeholder support
- Funding
- Eligibility and availability

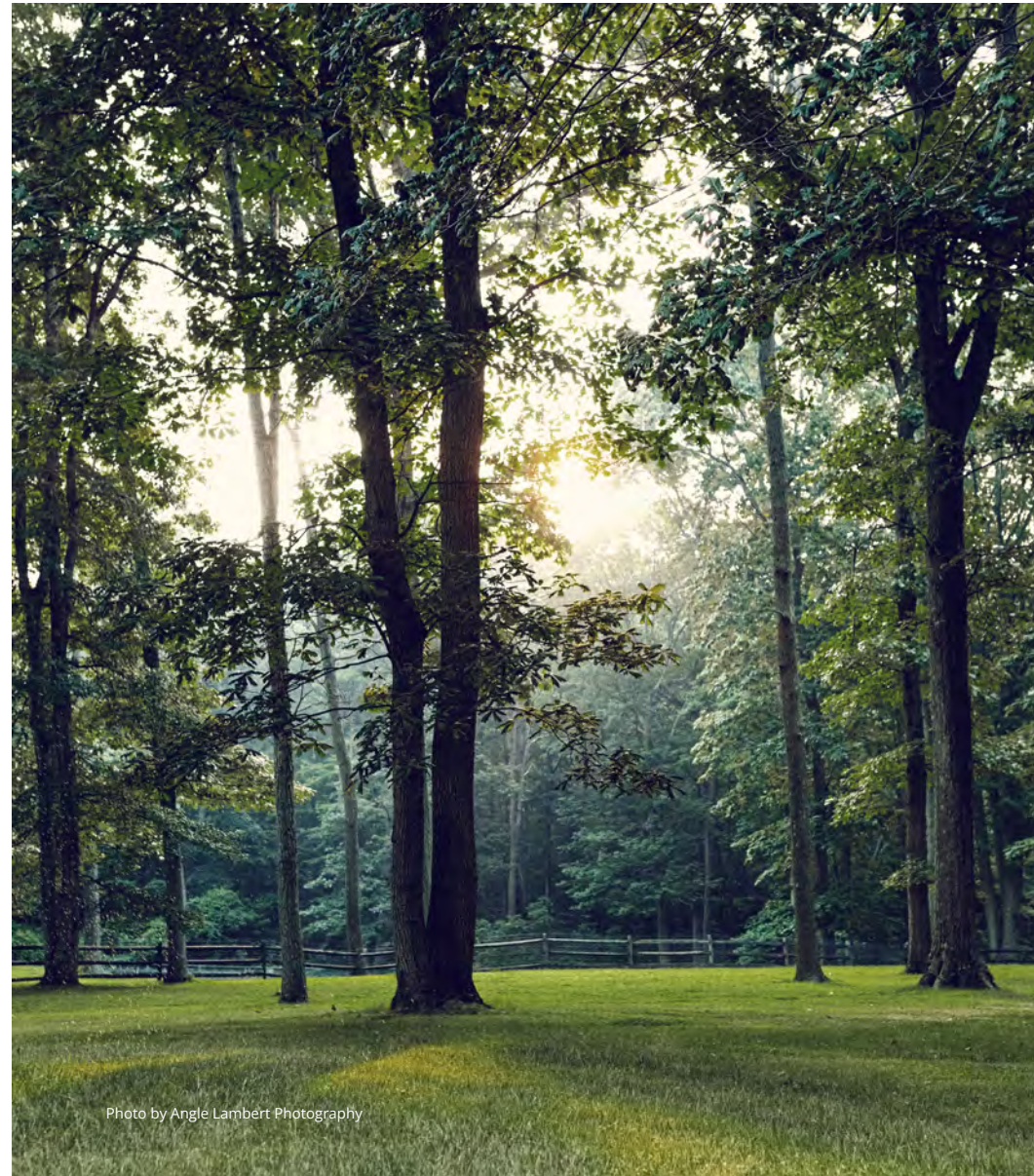


Photo by Angle Lambert Photography



*View from MCF Office
on Monmouth County
Park System land*

**MCF Acknowledges our Fiscal Year 2022
Public Agency Partners, including:**

- US Department of Defense
- US Navy Department
- Naval Weapons Station Earle
- NJ Department of Agriculture Farmland Preservation Program
- NJ Department of Environmental Protection Green Acres Program
- Monmouth County
- Monmouth County Board of County Commissioners
- Monmouth County Agriculture Development Board
- Monmouth County Board of Recreation Commissioners
- Monmouth County Department of Planning
- Monmouth County Park System
- Aberdeen Township
- Colts Neck Township
- Fair Haven Borough
- Holmdel Township
- Howell Township
- Long Branch City
- Middletown Township
- Millstone Township
- Neptune Township
- Red Bank Borough
- Sea Bright Borough

7



PRESERVATION HIGHLIGHTS: STIVALA FARM

Photo by Jena Cosimo

Monmouth Conservation Foundation

The Stivala Family's farm in Colts Neck is now preserved, thanks to the efforts of MCF, the State Agriculture Development Committee, Monmouth County, and Colts Neck Township. Over nearly four decades, Mike and Eileen Stivala have crafted their farm with sustainable features and a genuine respect for its natural attributes, choosing to live differently as true stewards of their land. The farm's 19 acres represent a quintessential example of rural farm life in Colts Neck, as detailed in our feature story [HERE](#).



Eileen and Mike Stivala
with their puppy, Mason
Photo by Jena Cosimo



Photo by Jena Cosimo



Photo by Jena Cosimo



The Stivalas will continue to farm and enjoy their homestead, as will generations to follow, thanks to it being permanently protected from development under an agricultural easement. The site is contiguous to the 63-acre [DeGroot Farm](#), already preserved through the State's Farmland Preservation Program, making its preservation even more impactful.

Photo by Fred Yahn, Eagle Drone Solutions, LLC

There is no Garden State without gardens. Some of the most fertile farmland in the state of New Jersey is right here in Monmouth County, yet only 30% of it is preserved. To maintain our county's pastoral character; save fresh, healthy food sources; and support farmers' livelihoods, we must save agricultural lands.

An aerial photograph showing a residential neighborhood with several houses, a large green field, and a cemetery. The text 'PRESERVATION HIGHLIGHTS: A FOCUS ON HISTORY' is overlaid on the left side of the image.

PRESERVATION HIGHLIGHTS: A FOCUS ON HISTORY

Photo by Fred Yahn, Eagle Drone Solutions, LLC

MCF's charge as a land trust is to save open space - sometimes for preserving natural habitat, providing waterfront access, or protecting waterways - in other cases, to sustain farming, and often times to create parks for passive or active recreation. As of recent, a few of our collaborative preservation projects have focused on conserving lands with historical significance.

Sgt. George Ashby Memorial Park

In the westernmost reach of Monmouth County is the charming, historic Borough of Allentown. The municipality is brimming with history, including the story of many African American residents from the period preceding the Civil War when Allentown was once a stop on the Underground Railroad. One celebrated resident is Sgt. George Ashby, who became New Jersey's last surviving Civil War veteran and the namesake of the [newest park in Allentown](#).

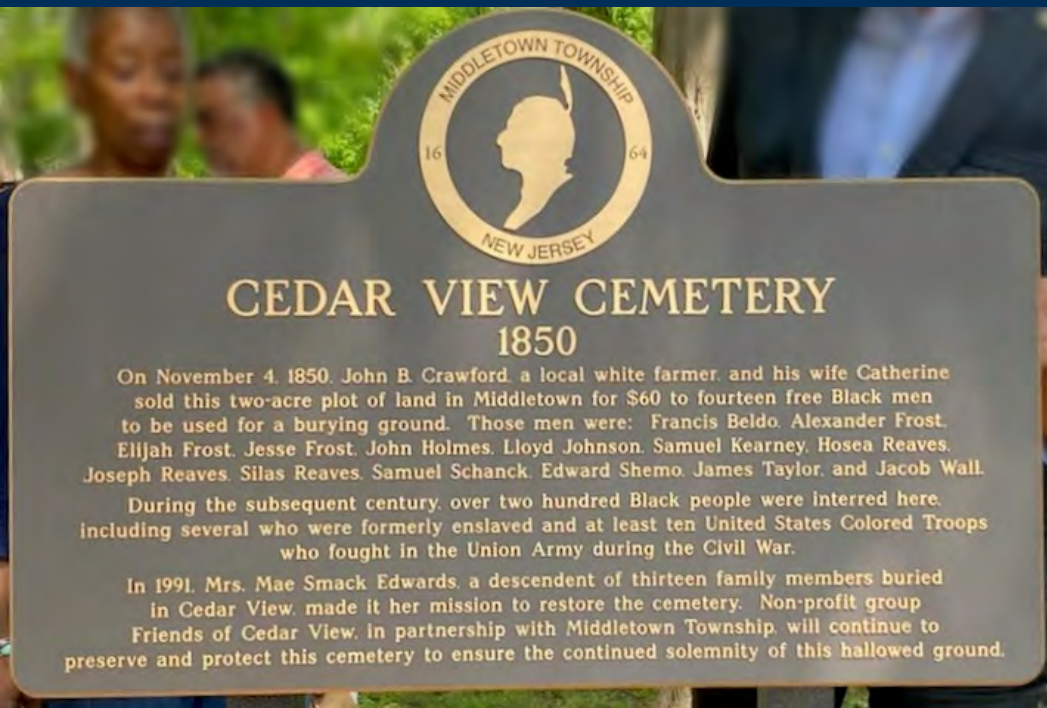


Photo by Jerry Carino app.com

"The theme of the park is inclusive history."

-- Allison Arnone, Chairwoman of the Allentown Open Space and Parks Committee and Secretary of the Historic Preservation Review Commission

In 2016, MCF dedicated funding towards the purchase of the land that is now being transformed into Sgt. George Ashby Memorial Park in downtown Allentown, adjacent to the cemetery where Ashby and many other members of the black community from that time are buried. Phase one construction was completed at the three-acre park in November 2021, installing landscaping and walkways that will lead to a future monument paying homage to Ashby and the Allentown black community's many contributions. Ongoing enhancements at the park are supported by Monmouth County, the Borough of Allentown, MCF, and Allentown's municipal open space tax.



Cedar View Cemetery

MCF is proud to be collaborating with the Friends of Cedar View, a fellow nonprofit organization whose mission is to preserve and protect the historic African American Cedar View cemetery in Lincroft, New Jersey. Located off Hurley's Lane directly behind St. Leo the Great Catholic Church, Cedar View Cemetery dates back to approximately 1850 and is the final resting place of interred souls of up to an estimated 200 men, women, and children, many of whom were the families of freed slaves, and at least a dozen Civil War veterans who served what was, at the time, the US Colored Troops.

"Not many cemeteries from this period are really preserved and identified, and certainly African-American ones are... just about disappeared," remarked Maureen O'Connor Leach, Commissioner for the Monmouth County Historic Commission. "This is a treasure to find..."

Monmouth Conservation Foundation



Plots were sold to individual owners, rather than an entire cemetery managed by a church or other organization, which led to Cedar View becoming overlooked and eventually neglected. Since 2015, numerous community and ecumenical volunteer organizations have worked to restore the Cemetery, uncovering headstones and clearing overgrown plant life. The overarching aim is to ensure the continued solemnity of this hallowed ground; and to bring increased awareness of the cemetery's unique historical and the overall cultural value that it brings to the public.

MCF took part in a special Memorial Day 2022 Ceremony at Cedar View Cemetery, at which Middletown Mayor Tony Perry presented a plaque of historic significance for the site. (Pictured L-R): MCF Trustees* and Spouses: Cindy Weber-Cleary*, Denis Cleary, Larry Fink*, John Smack*, William Kastning, Tina Kastning, Gloria Nilson*, and Len Nilson

Current Priorities: Preserving Land to Safeguard At-Risk Military Capabilities

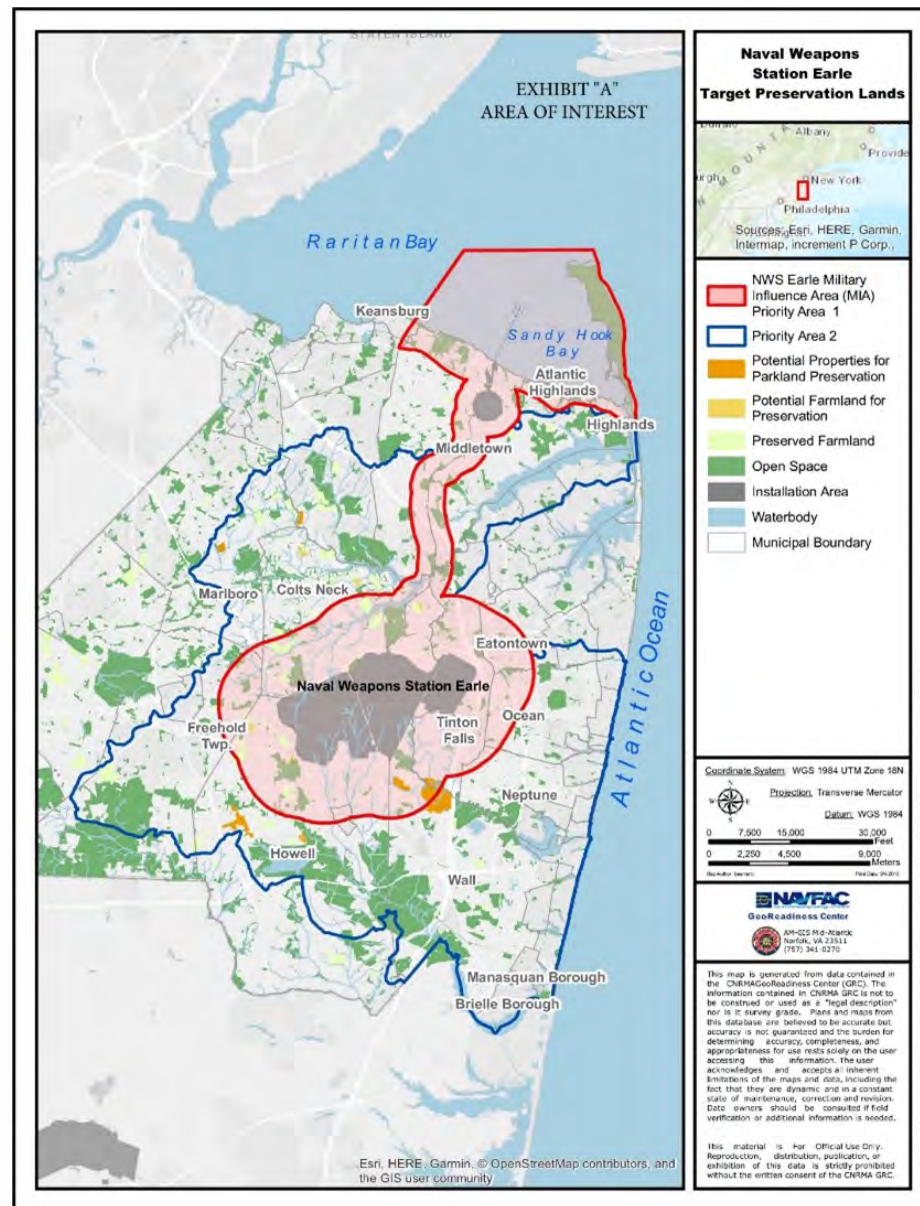


Aerial View of Naval Weapons Station Earle
Photo by Jeffrey C. Doepp, Courtesy of US Navy

Monmouth Conservation Foundation

Since being awarded just over \$2 million in federal funding through the Department of Defense (DOD) in 2018 and 2019, MCF and Monmouth County have been working to permanently protect additional land that buffers Naval Weapons Station Earle’s (NWSE) nearly 12,000 acres from the Leonardo community in Middletown to Howell – containing one of the largest wooded areas in the County. Together we are collaborating with the US Navy through the Readiness and Environmental Protection Integration (REPI) Program to prevent incompatible development, preserve farmland and wetlands, protect wildlife, and add to existing parks, which will allow NWSE to maintain operations security and decrease potential risk to the public.

The REPI Program funds Congress-authorized cost-sharing partnerships among the Military Services, private conservation groups (like MCF), and state and local governments to acquire property. This is typically achieved in the form of conservation easements from willing landowners and, where relevant, restoration is conducted on the land. MCF has identified several eligible parcels of land for protection and is actively negotiating with interested property holders to protect their land through an easement, a legal document that will restrict further development and uphold conservation values found on the property. Simultaneously, we are working to fundraise as the REPI award requires a 1:1 match from other funding sources.





As REPI projects come to fruition, they form areas of protected or restored land and build resistance to climate change impacts and hazards such as flooding, wildfires, and droughts. We expect our first easement to be finalized in early 2023 in Howell with additional sites in the pipeline in Colts Neck. We are hopeful that the REPI Program will be a steady source of funding for us and our partners to preserve significant acreage along NWSE borders.



Photo by Tina Colella Photography

Monmouth Conservation Foundation

*L-R, Front: Lee Woodruff, Co-Founder of the Bob Woodruff Foundation; Larry Fink, MCF President; Anne Fink;
Back: Lieutenant Commander James R. McCarty, Executive Officer at Naval Weapons Station Earle (NWSE); Captain Edward L. Callahan, Commanding Officer
at MCF's 2022 Holiday Style Luncheon and Shopping Spree*



CURRENT PRIORITIES: PARK DEVELOPMENT

Not long ago, we all faced a difficult period during the pandemic shutdown, when we were isolated and scared. We sincerely appreciate the many healthcare, frontline, and essential workers who got us through it.

We hope you also remember how important the outdoors were during the pandemic when our normal indoor activities were hindered. Parking lots for parks were often full; wooded trails and pedestrian trails were bustling; playgrounds were abuzz as children and families waited their turn to ride and play. Our parks, trails, beaches, and other recreational spaces offered solace and a safe space for everyone to connect, unwind, or refuel. They gave us freedom in a very challenging period.

Our mandated, sheltered time indoors heightened the need for equitable access to open space for everyone and energized MCF's park development efforts, particularly in underserved communities.

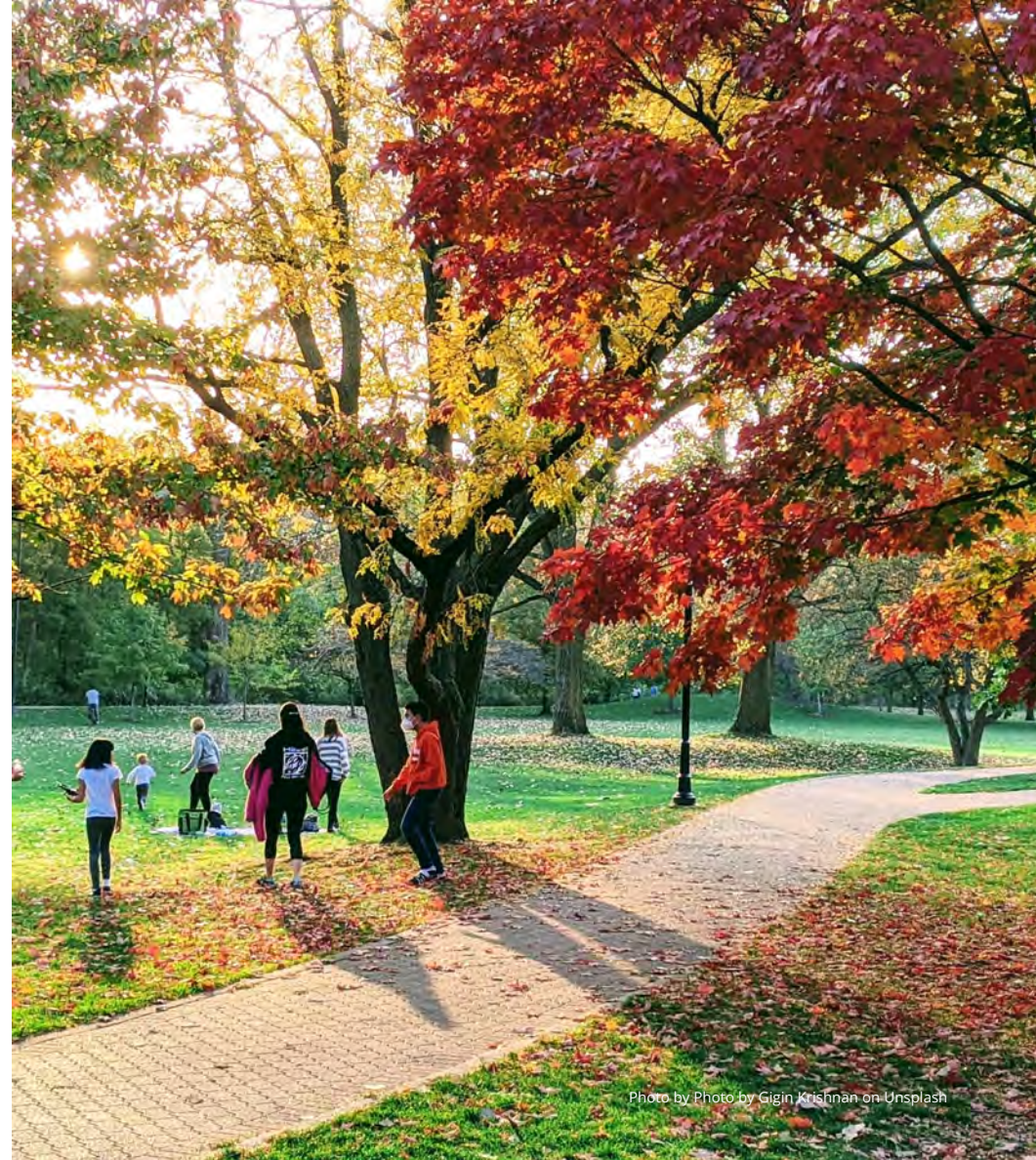


Photo by Photo by Gigin Krishnan on Unsplash

MCF's goal is for every person to have access to green space within ten minutes' walking or biking distance from their homes.



“It is vital that all communities have nearby access to parks, open land, clean air and fresh water.”

- Bill Kastning, MCF Executive Director

Photo by Tina Colella Photography

Fiscal Year 2022 park development highlights include efforts to enhance existing parks and re-develop existing spaces into parks.

Edgemere Park, Borough of Sea Girt

MCF secured a \$10,000 anonymous grant through the National Philanthropic Trust to install a pollinator garden at Edgemere Park in partnership with the Sea Girt Conservancy. To include native plants and flowers, the garden will serve as a refuge for bees, butterflies, and hummingbirds and add to the natural beauty of the 2.69-acre park for visitors. The project is on track for completion in 2023.



Jackson Woods Park, City of Long Branch

MCF continues to support the Friends of Jackson Woods and the City of Long Branch in revitalizing Jackson Woods Park. The 13-acre natural site was neglected, overgrown, and littered with garbage until 2018 when a group of concerned citizens – Friends of Jackson Woods – formed to revive it. MCF began partnering with Friends shortly thereafter and now serves as their representative 501(c)(3), to assist with fundraising and marketing and to leverage relationships and partnerships toward our shared goals of restoring the park for ecological and public benefit.

Among our joint activities this year, MCF launched a [donation page](#) for Jackson Woods Park, sought several grants, and organized a volunteer work day with OceanFirst Bank's "Wave Makers" as part of EarthShare New Jersey's Green Day Challenge in October 2021. The OceanFirst volunteers planted mums in park entrance areas and completed plantings for the pollinator garden. They are among countless individuals and organizations who have lent their time and efforts during weekly work days at the park.



Photos courtesy of Friends of Jackson Woods



Photo by Fred Yahn, Eagle Drone Solutions, LLC

Shrewsbury Riverfront Park, Borough of Sea Bright

Ten years after [Superstorm Sandy](#) ravaged the Jersey Shore in 2012, Shrewsbury Riverfront Park is coming to fruition at the site of a former apartment complex damaged by the storm. The land was acquired using Green Acres funds and a grant from the National Park Service Lands and Water Conservation Fund. A collaboration of Monmouth County, the Borough of Sea Bright, and MCF, the 1.05-acre park offers beautiful views and fishing access. Phase One construction was completed this year, with walking paths, open green space, and installation of benches and fencing along the waterfront. Generous [donations and sponsorships](#) continue to drive the park's progress, and completion is scheduled for summer 2023 with additional amenities like a patio, pavilion, and landscaping.

Sunset Park, Borough of Red Bank

Kickstarted by a transformational gift made this fall – the largest in MCF's history to date – from an anonymous donor, we are partnering with the Borough of Red Bank to transform its former landfill into an eight-acre park in the Borough's underserved west side along the Swimming River. The park will become a reality in the coming years, following assessment and remediation of the site, further planning with community input, and additional fundraising for these steps and, ultimately, construction. See additional details in the Donor Impact Stories section of this report.



Photo by Fred Yahn, Eagle Drone Solutions, LLC



Swimming River Park, Middletown Township

An effort years in the making, Swimming River Park is a [successful collaboration](#) of the Monmouth County Board of County Commissioners, the Monmouth County Park System, and MCF to transform the former Chris' Deli and Marina property in the River Plaza section of Middletown into an 18-acre waterfront park. Construction began in summer 2022 on park improvements including new bulkheading and a boat ramp, a kayak beach launch area, parking area, and walking trail, led by the County. Renovations also involve final stages of a necessary clean-up – installing a cap to seal contaminants from asphalt road millings and other waste discarded at the site over the years, making the site safe and usable by the public and helping to restore a natural watershed.

In 2023, an overlook memorial for MCF co-founder Judith Stanley Coleman (1935 – 2010), a well-known community activist, philanthropist, and lifelong resident of Monmouth County, will be installed at the park. The project was funded by donations made to MCF to honor Judy and carry on her legacy for the benefit of the public. Once the planned improvements are completed, Swimming River Park will offer year-round access to the Navesink and Swimming Rivers for fishing, crabbing, wildlife observation, and touring the picturesque marshes and coves of the extensive watershed.



Current Priorities: Diversity, Equity, and Inclusion



The growing economic and ethnic diversity of our community demands that MCF mirrors that heterogeneity both inwardly and outwardly. To that end, in early 2022 we formed a new standing committee of our Board of Trustees: the Diversity, Equity and Inclusion (DEI) Committee, comprised of trustees and our staff. The committee's preliminary assessment included acknowledgment of the lack of diversity across our staff and board and the need for expert guidance to drive the organizational change our community deserves, as quickly as possible.

For efficiency and to maximize our impact, we will hire an experienced and highly regarded DEI consultant to work with us during the coming year. The consultancy will lead MCF through an intensive analysis and in-depth training to initiate comprehensive strategies around DEI across all functions of the organization including our recruitment, acquisition and park development efforts, programming, and community engagement activities. MCF is grateful to the Mary Owen Borden Foundation, New Jersey Conservation Foundation's Franklin Parker Conservation Excellence Grants program, and the OceanFirst Foundation for supporting initial steps in this important endeavor.



In the Works



Photo by Markus Spiske on Unsplash

The MCF team is hopeful to finalize several land preservation projects underway this year, including:

200+-acre horse farm in Colts Neck

- via a conservation easement through the REPI program
- in partnership with the US DOD, US Navy, Monmouth County, and Colts Neck Township
- in progress since 2018
- substantial acreage; high impact project
- significant fundraising goal to meet US DOD funding match requirement



Photo by Fred Yahn, Eagle Drone Solutions, LLC

20-acre forested property in Howell

- via a conservation easement through the Department of Defense (DOD) REPI program
- pilot project for all partners to understand how to work together
- in partnership with US DOD, US Navy, Monmouth County, and Howell Township
- in progress since 2020

Half-acre open space across three parcels in Neptune

- via donation by owner facilitated by MCF
- in partnership with Neptune Township
- in progress since 2022

17.23-acre waterfront property in Middletown (Locust)

- via a fee simple purchase as an addition to Hartshorne Woods Park
- in partnership with Monmouth County Board of County Commissioners and Monmouth County Park System
- in progress since 2000 (over two decades)
- long-duration project brought to fruition through property owner's commitment to preservation, County funding and vision, and MCF's longstanding relationship and our brokerage facilitation with the owners



Photo by Fred Yahn, Eagle Drone Solutions, LLC

17.4-acres across two contiguous farm properties in Aberdeen

- via a conservation easement
- in partnership with Aberdeen Township
- additional partners and funding pending
- in progress since 2022
- only farmland remaining in area; high impact project

124-acres open space in Millstone

- via a fee simple purchase as addition to Millstone Park
- in partnership with NJ DEP Green Acres and Millstone Township
- in progress since 2021
- significant financial input (\$500,000) by MCF enabled by NJ DEP Green Acres grant



Honor Roll of Donors



Photo by Nicola Pavan on Unsplash

We gratefully acknowledge the following individuals, families, and organizations for their generous support during the 2022 fiscal year: July 1, 2021 to June 30, 2022.

Leadership Circle \$30,000 or Greater

Anonymous
Estate of John W. Duckett Jr.
Lilly and Peter Kemmerer
Valerie and Frank Montecalvo
Gloria and Lennart Nilson

Land and Wildlife Sustainer \$20,000 to \$29,999

Laura and Richard Saker

Steward of the Land \$10,000 to \$19,999

Sarah and Benson Chiles
Jamie and David Druckman
Holly and Michael Gonzales
Vikki and Bill Marrassini
Lisa and Quincy McKean III
Jane and Tim Orr

Conservator of Preservation \$5,000 to \$9,999

Mary and John Christopher
Mai and John Cleary
Leslie and Matthew Cohen
Tracy and Chris Cole
Anne and Laurence Fink
Lisbeth Giunta
Lucy and Mazin Kallian
Elizabeth and Charlie Komar
Mary Jane and Richard Kroon
Sheila Labrecque
Ann Marie Lynch
Chris and Veronica Meagher
Elyse and Jonathan Meer
Elizabeth and Bill Moss
Raj Mukherji
Elizabeth and Adam Rechnitz
Karen and Chris Rodriguez
Monica and John L. Ryan
Geri Skirkanich
Alexandra and Thomas Skove
Katherine Smith
Erin and Andrew Taffin
Mary and John Tassini
Gerri and Richard O. Venino Jr.
Sonia and Christian Zugel

Benefactor of Preservation \$2,500 to \$4,999

Pamela and Daniel Hertz III
Robin and John Klein
Emily J. Rechnitz
Leslie and Robert Sickles

Sponsor of Preservation \$1,000 to \$2,499

Paula Aldarelli	Genevieve and Derek DeBree	Donna and David Hoder	Barbara and John B. Lewis	Nan Smith and Richard Catanese
Christine and Alexander Baugh	Derek Debree	Deborah and Bruce Hohorst	Tricia and Robert Maguire	Carol Stillwell
Jennifer Beck	Joyce and Michael Dejohn	Marti and Bruce Huber	Lynne and Douglas Mangini	James J. Truncer
Ana and Richard Blank	Elizabeth and John Devlin Jr.	Sam Huber	Marion and Sean Moran	Elizabeth and Robert Wilson
The Boylan-Flego Family	George Dittmar	Cathy and William Ingram	Barbara and William Nadler	Chrissy Yaccarino
Lois S. Broder	Aidan Ehrenberg	Casey Jansen Jr.	Trudy and Charlie Parton	
Heather Burke and Colin Day	Elena and Thomas Fahey	Tina and William Kastning	Betty and Randy Rauscher	
Lillian and Donald L. Burry	William Ford	Kate Ketchem and Michael Wu	Margaret Riker	
Karin Busichio	Susan and David Fowler	Estelle and John Ketterer	Frank Scheuer	
Cathleen and Stephen Cottrell	Robert Gagliano	Aparna Kumar	Jon Schwartz	
Denise and Mark DeAngelis	Juliet and Ron Gumbaz	Angie and Eric Lambert	John Smack	

Patron of Preservation \$500 to \$999

Matt Anderson	Corey and Leonard Cohen	Carol McEvoy	Linda and Andrew Safran
Diane Anthony	Brook and Vincent Coppola	Heather and Alex McKeown	Phyllis Salvato
Ann Aronson	Clara and John Dale Jr.	Mark Mullen	Thom and Donna Snider
Mary Kate and Gregg Azcuy	Carolyn Desena	Julie and Jeffrey Mullen	Bridget Tedesco
Sarah and William Barrett	Gail Duffy	David Munshine	Bonnie Torcivia
Michel Berger	Karen Goldblatt	Brian Nelson	Marisa and Drew Train
Jennifer and Ralph Blumenthal	Sandy Halsey	Deborah Nelson	Ann and William Westerfield
Diane and John Burke Jr.	Hope Jones Jr.	Sarah Orsay and Russell Montalbano	Susan and Daniel Whalen
Bill Cahill	Emily and Kenneth Lackey	Karen and Tim Piacentini	Eric Wokas
Carol Cerussi	Lois S. Maloney	Maryls and William* Potter III	Alan Zakin
Cathy Clark	Monica Manning	Richard Ricciardi	
Cynthia Weber-Cleary and Denis Cleary	George W. C. McCarter	Suzanne and and Matthew Rummler	<i>*Deceased</i>

Save the Farm Friend \$250 to \$499

Anonymous	Maureen Ellen and Kevin Conery	Mary and Gregory Heins	Nora and Kenny King	David Meirs	Lisa Rettino	Ann and William White
Joan and Paul Bartoli	Jonathan Coon	Gail and Guy Hembling	Bernice and Frederick Kniesler	Joan and Henry Mercer III	Danielle Ruggiero	KellyZaccaro
Sherri Bender	Paul Cox	Sandy and Bill Henning	Judy and David Krusell	Teresa Metcalf	Gladys Salazar	
Katharine and David Bender	Shobha and Ashok Erramilli	Lauren Holman	Dory Kurowski	Patrick Moran*	Maureen and Timothy Saling	
Beverly Beveridge	Monica and Alvin Faett	Andrea Huber	Susan and David Kuykendall	Barbara Nevius	Alyssa and Andrew Scheffer	
Marcia and Thomas Blackwell	Missy and Geoffrey Falkenberg	Janet and Lawrence Jackel	Kevin Leahy	Robbyn P. O'Neill	Marilyn and Bob Schlossbach	
Georgia Blair	Claudia Ganz	Marlene and Niels Johnsen	Linda Lipman	Roseann and John Paone	Sherie and Matthew Shaloo	
Donna Bower	Pamela and John Gehret	Ann and Michael Jordan	Maryrose and William Little	Michael Parent	Barbara Singer Esq.	
Colleen and Martin Byrne	Mark Gilbertson	Kathy Kamatani	Claire Lonegan and Ted Wojtech	Mark Pasmantier, M.D.	Karen and Stephen Strickland	
Elisabeth Casey	Suzanne and Richard Gottuso	Francis X. Keegan Jr.	Barbara Lovell	Andrew Provence	Carol Toolan	
Timothy Clarke	Katherine and Mark Hannah	Kathleen Kenney	Mary Jane Maser	Vincent Pungello	Elizabeth and Lewis Turner	
Maleigha Coleman	Margot and Russel Heckler	Anis Khalil	Kelly and Henry Matri	Melody and Jeffrey Ragle	Christina and Daniel Weber	<i>*Deceased</i>

Save the Orchard Friend \$125 to \$249

Jennifer and Joseph Anderson	Hope Brodsky	Zack Gilstein	Tamia Karlinski	Francesca Martone	Gail O'Reilly	June and Morton Seligman
Beverly Annarella	Marilyn and Bob Broege	James J. Gobat	Karen and Kenneth Keene	Lynn McCabe	Alfred Ochsner	Barbara Shedden
Meredyth Armitage*	Kathy Buchan	Jaime Grant	Etta Kelly	Brian McNally	Patti and Vernon Ralph	Barb and Jim Smith
Cindy Barham	Sasha Buerano	Anna Greeley	Elizabeth Kirk	Liz McNally	Betty and Robert Randall	Nancy Smith
Talene Baroyan	Giselle Cardell	Ellen Grossman	Marianne Kligman	Kathy McQuillan	Silvana Romano	Lynn and William Spector
Joseph Barris	Jacqueline Caruso-Smith	Margie and Seth Grumet	Angela Kluwin	Jane Meggitt*	Charlie Rooney	John Spinelli
Jennifer and James Beardsley	Wendy and Peter Coggins	Kim Guadagno	Claire and Woody Knopf	Lynn and Conrad Miller	Suzanne and Karl Rudiger	Marie Steinberg
Geralyn and Rick Behring	Linda and Richard Cohen	Kathleen Horgan	Susan and Joe Kyrillos Jr.	Dana and Doug Miller	Margaret and Richard Santulli	Margot Takian
Robin Blair	Anne Delaney	Anna Grace Howie	Diana Landreth	Douglas Mociak	Mr. and Mrs. George Schildge	Carol Wade
Joe Bonfiglio	Sheila and Ian Ehrenberg	Daren and James Hutchinson	Nema and Richard Magovern	Daniel Monzi	Linda Schottland	Jacquelyn Wenzel-Jungkunst
Katharine Bouckley	Denise and Gerard Frederickson	Kathy Jones	Patricia and Richard Mahon	Jennifer and Thomas Mullins IV	Jamie and Dennis Scurletis	Ali and Ross Wilharm
Roger Bove	Stacey Giglio	Kathy Karlen Donnelly	Gerald Mahood	Sossie and Tavit Najarian	Valerie and Robert Seeley	Lisa and Ken Wilson Jr.

Friend Under \$125

Susan Allen	Corey Catanese	Marcia Giffin	Elizabeth and Edward King	Toni Mullins	Peter Sillen
Joyce Allison	Patricia Citarella	Tom* and Valerie Gimbel III	Amanda Klaus	Meaghan Murphy	Philip Silva
Richard Ambrosio	Janet Clapp	Lillian and John Giordano	Christl and Herwig Kogelnik	Linda and Michael Murphy	Simone Soernsen
Judy Anderson	Kathleen and Kenneth Cleary	Katherine and Philip Gledhill	Dido and Sark Krikorian	Jean Nelson-Crosby	Jean Sorrells
Sandra Andrews	Matthew Cohen	Barbara and Michael Goldfarb	Erin Kurdyl	Patricia and Michael Oberdorf	Gail and Terry Spencer
Ann Marie Anise	Suzan Cole	Traudy Grande	Maureen and Michael Lake	Dena Orfanitopoulos	Nancy and Robert Stewart
Jessica Baldes	Janet Concepcion	Kristin and Sean Greeley	Leeann Lavin	Sarah Pack	Lynn Stipick
Sosi and John Balian	Pat and Mario Connolly	Maxine and Harry Greenwald	Jennifer Lewis	Marilyn Pearlman	Elizabeth and Paul Sully
Ruth Barker	Kristyn Corace	Giuseppe Grillo	Adam Lindstrom	Lisa Petrillo	Elizabeth Sweeney
Barbara Bascom	Kevin Cuskley	Nancy and Robert Haaren	Margaret Love	Pat and John Pflieger	Zaida Tavares
Adele and Peter Beekman	Savita D'Agostino	Barbara and Gregory Haines	John Luard	Neide Pinho	Jennifer and Vito Terranova
Annette Benanti	Annama Daniel	KW Hanson	Dorsey and Rich Lucas	Joyce and Steven Putterman	Paula Thorgood
Janet Berk	Elizabeth Debree	Janice Haraz	Anthony MacDonald	Dottsie and Richard Rehm	Elyse Vanderspiegel
Candice Bidner	Christopher Delaura	Ruthanne Harrison	Amy and Robert MacFadyen	Leslie Reni	Nicole Varno
Dianne and James Bollerman	Lesley DeVoe	Macaire Henderson-Osmont	George Maraza	Barbara Richards	Arianna and John Vig
Susan and Gordon Bostic II	Molly Dirscherl	Sharon and Clark Herman	Mary and Thomas Marhevka	Barbara and Edward Rosen	Anita Voogt
Robert Boyle	Laura and Robert Ditommaso	Christina Hewitt	Hayley Marino	Barbara Rufe	Cathy and Gene Weber
Linda Lee and Kevin Breen	Megan Dougherty	Rachel Hoffmann	Jamie Mason	Linda and Thomas Rule	Helen Weingart*
Amanda and John Brockwell	Maureen Dronne	Wickie Hom	George Mayer Jr.	Felicia Russell	Greg Westfall
Melissa Bryant	Roberta Eggert	David Horsnall	Mary and Peter McCurrach	Jody and Raymond Sackett	Crystal Whitehead
Kevin Buchan	Margaret and Jean Paul Elard	Tabitha Huber	Martin McHugh	Donna and Steven Salimando	Ann Wilkening
Susan and Michael Buchenberger	Cynthia Fair	Bonnie Imposimato	Cynthia and Craig McKeown	Deborah and Bruno Savo	Tracey and Marc Wolfman
Marka and Griffin Burnett	Grace and Philip Falcone	Marie Jackson	Frida and John McLaughlin	Sara Sayed	Peter Woodward
Nancy Byron	Mary Feeney	Leigh Juska	Christina and Daniel McNamara	Shelley and Sidney Schultz	Anne and David Zack
Francine Campis	Janet Fell	Denessa and Douglas Kahn	Lorri and James Mellish	Carol and James Scollay	Caitlin Zavorskas
Carolyn Campo	Sofia and Martin Frumkin	C. and R. Kanner	Paula Metz	Robert Scott	
Karin Carl	Gregory Galasso	Barbara Kennedy	Carol and Joseph Monaco	Arthur Servilla	
Fred Carl	Kin Gee	Alice Kessler	Maggie and Robert Moore	Mark Sessock	
Patricia Casey	Patricia and Herbert Geiss	Pamela Keyl	Manus Mullanaphy	Roanne Shriver	<i>*Deceased</i>

Corporate, Foundation, and Organization Donors

Accounting for Success

Anonymous

Bayshore Family of Companies

Bundy Family Foundation

Circle Motorsport/BMW

Clean Ocean Action

Cups and Cakes

Data Pros

Dimension Dental

Dittmar Insurance Agency

EarthShare New Jersey

Garden Club of Fair Haven

Garden Club of Rumson

George Backer Family Foundation

J.A.M. Anonymous Foundation, Inc.

J.M. Huber Corporation

Koonin Family Foundation

Lionheart Fund

Litwin & Provence, LLC

Lomurro Law

Lucille and Maurice Pollack Fund

Lusty Lobster

Lynch Blades Foundation, Inc.

Mary Owen Borden Memorial Foundation

Mesa Verde Incorporated

Metrovation/The Grove

Meyhen International Corp.

Middletown High School South

Monmouth Medical Center

Foundation/RWJBarnabas Health

Monmouth University

Montecalvo Family Foundation

National Philanthropic Trust

New Jersey Natural Gas

OceanFirst Foundation

Saker ShopRites

Sea Girt Community Appeal

SEALS Eastern

Senator Declan O'Scanlon

Shore Point Distributing Co. Inc.

Sickles Market

Studio B

The Ketterer Family Foundation

The Shadowbrook at Shrewsbury

The Smith Family Foundation

The Vin Gopal Civic Association

VHB/Brinkerhoff Environmental

Services

WorkWave

In Kind Corporate Gifts

Angie Lambert Photography

Bayshore Family of Companies

Bell Works (Somerset Development)

Crazees Ice Cream

J.A.M. Anonymous Foundation, Inc.

Janice Hahn Studio

Raymond Salani Photography

Shore Point Distributing Co., Inc.

Sickles Market

The French Market Rumson

Tina Colella Photography

Triumph Brewing Co. Restaurant & Brewery

Two River Theater



In Kind Individual Donors

Carol List

Danielle Ruggerio

Elyse and Jonathan Meer

Holly Boylan Flego

Lynne Ward



In Tribute: Gifts in Memory of Robert Abrams

Jane Meggitt

In Tribute: Gifts in Memory of Jean Laidig

Helen Weingart

In Tribute: Gifts in Memory of Theodore J. Reiss

Marka Burnett

In Tribute: Gifts In Memory of Howard P. Aronson

Lilly and Peter Kemmerer

In Tribute: Gifts in Memory of Granville D. Magee

Barbara Bascom

In Tribute: Gifts for Birthday of Susan Kelemen

Valerie Montecalvo

Holiday-Style Luncheon and Shopping Spree 2021 Vendors

Atticco Scarf Collection

China Cabinet

Francine's Outrageous Foods

J. McLaughlin of Rumson

MACJAC Elegant Gifts

Peony's Envy

Redfield Tack

The Shompole Collection

By George Baby

Down to Basics

Geaux Jewelry

Janet Mavec Jewelry

Michael Duru Clothier

Pleasant Valley Lavender Farm

Tamarack Handcrafted

Catch All Gifts

Falguni Shane Peacock

Happy Buddha

Lotus Way

Old Mill Pond Farm

Purple Dew Jewelry

Tanya Karoon Jewelry

Donor Impact Stories



Photo by Ray Hennessy on Unsplash

Largest Gift in MCF's History will Help Transform Former Landfill into a Community Park

In October 2021, an anonymous donor made a remarkable \$2 million donation to MCF – the largest gift in our organization's history – to support the creation of a park in the western side of Red Bank at the site of the Borough's former landfill. To be called Sunset Park, the eight-acre park on the banks of the Swimming River will come to fruition in the coming years as the Borough of Red Bank and MCF work through assessment, clean up, and ultimately restoration and construction. The park is one of three small area plans in Red Bank's current draft master plan.

The NJ Hazardous Discharge Site Remediation Fund (HDSRF) is a key funding partner in assessing the site to date and likely in future remediation work. MCF is hopeful to receive US Environmental Protection Agency (EPA) funding to complete assessment and planning; then we, the Borough of Red Bank, and our partners will work to aggressively fundraise to complete the vision for the park with input from the community. Once built, Sunset Park will bring much-needed green space and waterfront access to the underserved communities of Red Bank.



Photo by Fed Yahn, Eagle Drone Solutions, LLC



Longtime Supporters' Estate Gift Commitment Honored with Establishment of MCF's Legacy Society

On the eve of Gloria Nilson's 25th anniversary serving as an MCF Trustee, she and her husband, Len, made a significant bequest intention to MCF. Their commitment to include MCF in their will is another show of support beyond their decades of loyal involvement and many generous contributions to our organization. In recognition of their extraordinary support, MCF established the [Nilson Society](#) to honor Gloria and Len, and all those who choose to include MCF in their estate plans or planned giving.

The Nilson Society has a growing list of members who are making tremendous impacts through financial support of MCF's operations and preservation activities through vehicles such as bequests, retirement plans, life insurance, and real estate. In doing so, these thoughtful donors leave a powerful, lasting legacy.



Photo by Tina Colella Photography

"Those donors who join us in providing for MCF in their estate plans are helping to ensure that MCF will be able to continue its important work for decades to come."

- Gloria and Len Nilson

Focus on Finance



Photo by Anne Preble on Unsplash

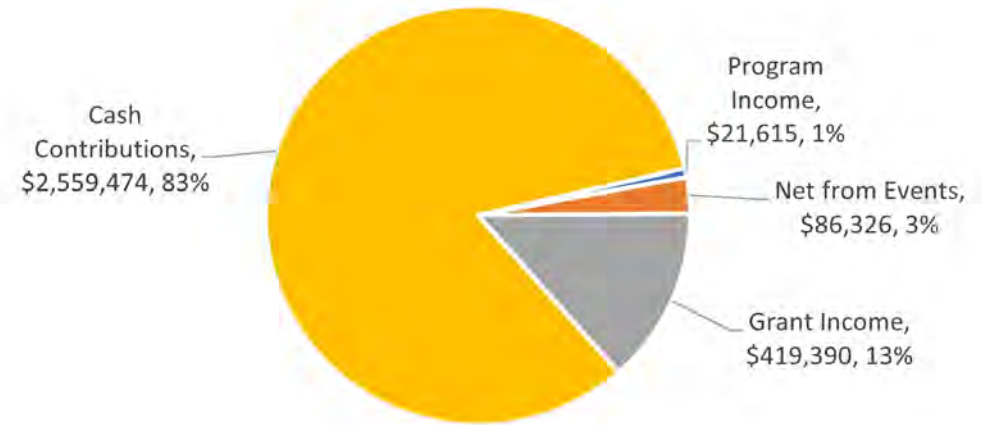
Focus on Finance

for the year ending
June 30, 2022

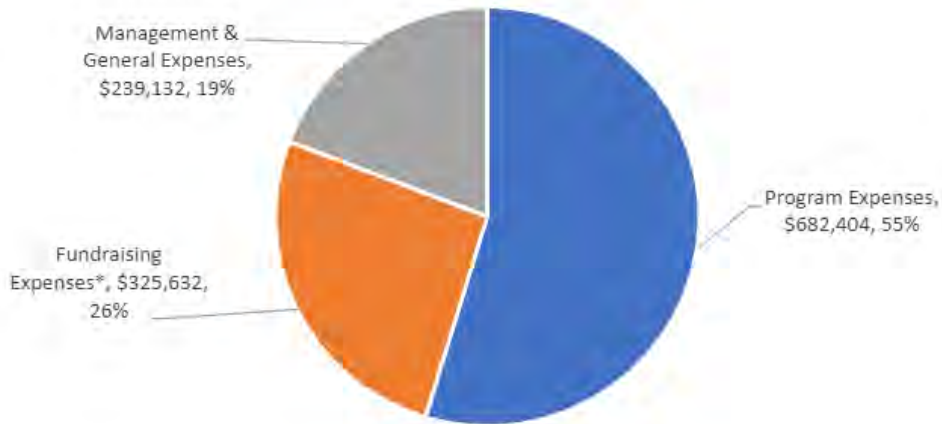
FY22 Organization Support & Revenue

Program Income	\$21,615	1%
Net from Events	\$86,326	3%
Grant Income	\$419,390	13%
Cash Contributions	\$2,559,474	83%
Total Organization Support & Revenue	\$2,559,474	100%

FY22 Organization Support & Revenue



FY22 Organization Expenses



FY22 Organization Expenses

Program Expenses	\$682,404	55%
Fundraising Expenses*	\$325,632	26%
Management & General Expenses	\$239,132	19%
Total Organizational Expenses	\$1,247,168	100%

*Fundraising expenses as a percentage of all expenditures were higher than in previous years due to investment in staffing and professional support for a dramatic expansion of our fundraising capacity in the coming years.

What We're Proud Of

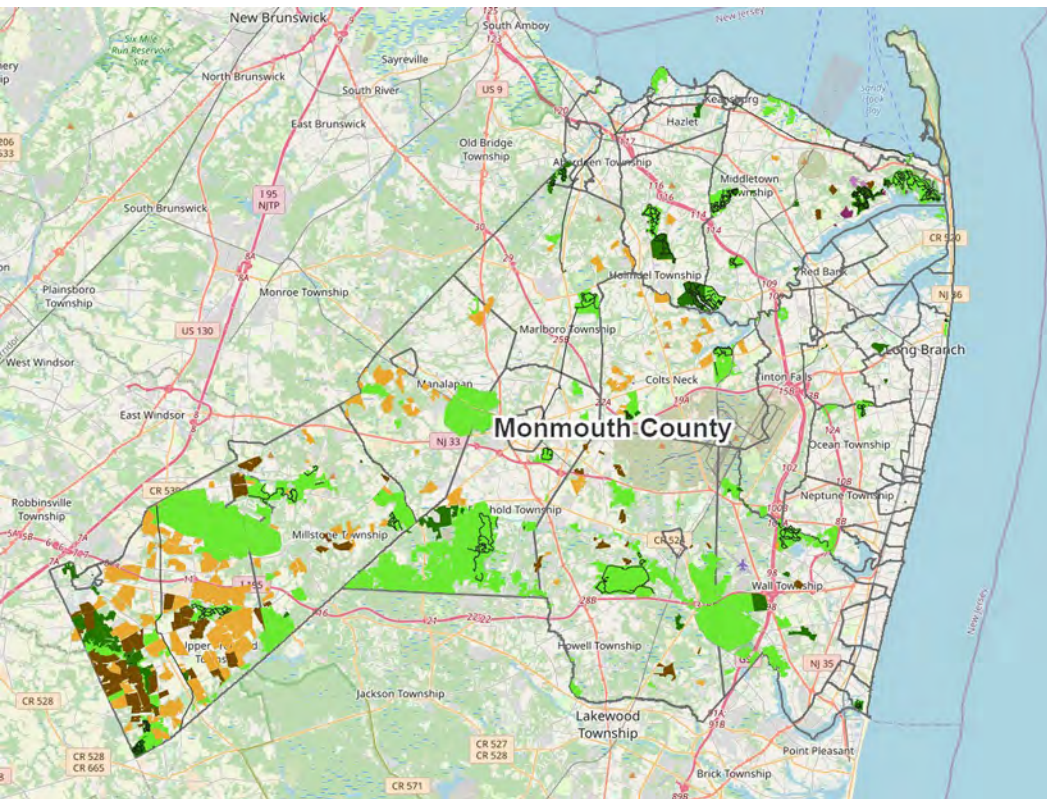


Photo by chris robert on Unsplash

Our Impact

To date MCF has assisted with the preservation of **8,934 acres** overall in Monmouth County. This acreage equates to the size of nearly eleven Central Parks or more than 6,700 football fields! Among these preserved acres, we have helped to conserve **4,331 acres** of County parklands – **24%** of Monmouth County Park System’s current 18,000 acres, acting as a facilitator among stakeholders and partners and/or by contributing funding.

MCF is currently responsible for stewarding 28 easements held by our organization, comprising nearly 400 acres and 18 easements held by Monmouth County Park System (MCPS), comprising 700 acres. In total, we responsibly and consistently oversee the protection of critical natural resources on approximately **1,100 acres** of protected lands through **46 easements** with annual monitoring visits and ongoing communications with the landowners.



Since 2013, MCF has served **3,000 students** in **25 schools** across Monmouth County, 75% of which are in Urban Aid communities, through our Kids for Conservation program. Our educational outreach programming was paused due to the pandemic and changes in staffing, and we look forward to resuming it soon.



Photo by David Clode on Unsplash

Our Credentials

MCF received **accreditation by the Land Trust Accreditation Commission** in 2014 and has continued to maintain this status since. Accreditation is awarded to land trusts meeting the highest national standards for excellence and conservation permanence. We are one of 459 accredited land trusts out of 1,100 nationwide.





MCF holds a **GuideStar Platinum Seal of Transparency**, the highest level of recognition offered by the world's largest source of nonprofit information. The Seal demonstrates our commitment to transparency and building confidence among our existing and potential supporters.

MCF is a proud **member of EarthShare New Jersey**, working collectively to mobilize the people of New Jersey to protect our land, water, air and wildlife, making the state a healthier place to live, work and play. EarthShare New Jersey bridges corporate partners with leading environmental organizations, making charitable giving and volunteering easy for their employees and customers.



Trustees and Staff

Active during Fiscal Year 2022:
July 1, 2021 to June 30, 2022



MCF Offices on Monmouth County Park System land

Photo by Bill Kastning

EXECUTIVE COMMITTEE

Larry Fink, *President*

Matt Cohen, *Vice President*

Aidan P. Ehrenberg, *Secretary*

Chris Meagher, *Treasurer*

Holly Boylan Flego

W. Benson Chiles

John J. Christopher, *At Large*

Ronald Gumbaz, *At Large*

David J. Hoder, P.E.

Valerie Montecalvo, *At Large*

Gloria Nilson

Sarah Orsay, *At Large*

James J. Truncer*, *Ex-Officio*

Derek S. DeBree

Vin Gopal, *Senator, Ex-Officio*

Daniel L. Hertz III

Martin J. McHugh

Heather McKeown

Elizabeth Rechnitz

Chris Rodriguez

Robert H. Sickles

John A. Smack

John R. Tassini

Richard O. Venino Jr.

Cindy Weber-Cleary

Erik Yngstrom

TRUSTEES

Joe Barris, *Ex-Officio*

Jennifer Beck

Lillian Burry, *County*

Commissioner, Ex-Officio

Leonard Cohen

Tracey Cole

TRUSTEES EMERITUS

Martha Huber

Peter R. Kemmerer

John L. Ryan

Frank Scheuer

Mary Tassini

Trustees at MCF's 2022 Spring for Conservation Family Day



Photo by Tina Colella Photography

L-R: Sarah Orsay, Aidan Ehrenberg, Matt Cohen, Holly Boylan Flego, Ron Gumbaz, Larry Fink, John Smack, Jack and Mary Tassini, Frank Scheuer, Marty McHugh, and John Christopher



L-R: Anne Delaney, Bill Kastning, Kathleen Kenney, Jena Cosimo

Photo by Tina Colella Photography

STAFF

William D. Kastning, AICP
Executive Director

Karen Keene
Director of Development

Jena Cosimo
Director of Acquisitions

Kathleen Kenney
Development and Event Marketing Manager

Anne Delaney
Financial Records and Operations Manager



FORMER DEPUTY DIRECTOR HONORED

Former MCF Deputy Director, Amanda Brockwell, was recognized by the Friends of Jackson Woods for her contributions to revitalizing Jackson Woods Park in the City of Long Branch. A bench paying tribute to Amanda and MCF was installed this winter at the park. Amanda was a vital member of the MCF staff from 2015 to 2021, who greatly advanced our community projects, educational programs, strategic planning, marketing, and social media.



NEW DIRECTOR DEVELOPMENT

MCF welcomed Karen Keene as its new Director of Development in April 2022. Karen is a respected fundraising professional with nearly twenty years of diverse experience in major gift fundraising, development communications, and educational outreach. In line with her passions, Karen specializes in promoting initiatives related to environmental science, conservation, and education. She enjoys birding, exploring nature, beachcombing, and photography. Karen succeeded Jonathan Meer, who served as Director of Development from October of 2020 through April 2022.





Join Us

Photo by Timmy Wesley on Unsplash

4 WAYS TO CONTRIBUTE

1 Donations

Your tax deductible donations to MCF support the protection of land, education and outreach programs, and operations. Every dollar makes a difference!

2 Planned Gifts and Bequests

By including MCF in your estate plans, you'll join our founders' vision of saving open space for generations to come. Contact your financial advisor to learn how you can leave a meaningful legacy through vehicles such as your will, life insurance, or retirement fund.

3 Real Estate

A contribution of land or easement for conservation ensures its protection forever. Donations of real estate through MCF's Trade Lands Program allow property not suitable for conservation purposes to be transferred to MCF and sold, generating proceeds to drive MCF's mission and enable the preservation of land suitable for conservation.

To learn more, please contact Karen Keene, Director of Development at kkeene@monmouthconservation.org or 732.671.7000.

4 Take part in our signature fundraising events!

Saturday. May 13. 2023

Spring for Conservation Family Fun Day

Free entry for kids!

Bayonet Farm. Holmdel



Saturday. September 23. 2023

Fall for Conservation Cocktail Party

Featuring music by The Moroccan Shepherders

Fairway Farm. Middletown

Wednesday, November 29, 2023

Holiday-Style Luncheon and Shopping Spree

The Shadowbrook at Shrewsbury, New Jersey



Follow our [Events](#) page for additional details and happenings throughout the year!

To discuss sponsorship and partnership opportunities, please contact Kathleen Kenney, Development and Marketing Manager at kkenney@monmouthconservation.org or 732.671.7000.

Follow our work and get involved!

Visit www.monmouthconservation.org and sign up for our [enewsletters!](#)

Follow us on social media!





MONMOUTH CONSERVATION FOUNDATION

**“Conservation is a cause that has no end.
There is no point at which we will say our work is finished.”**

-Rachel Carson

