



2023
FALL for
CONSERVATION
Cocktail Party

MONMOUTH CONSERVATION FOUNDATION
Celebrating 46 Years of Land Preservation in Monmouth County

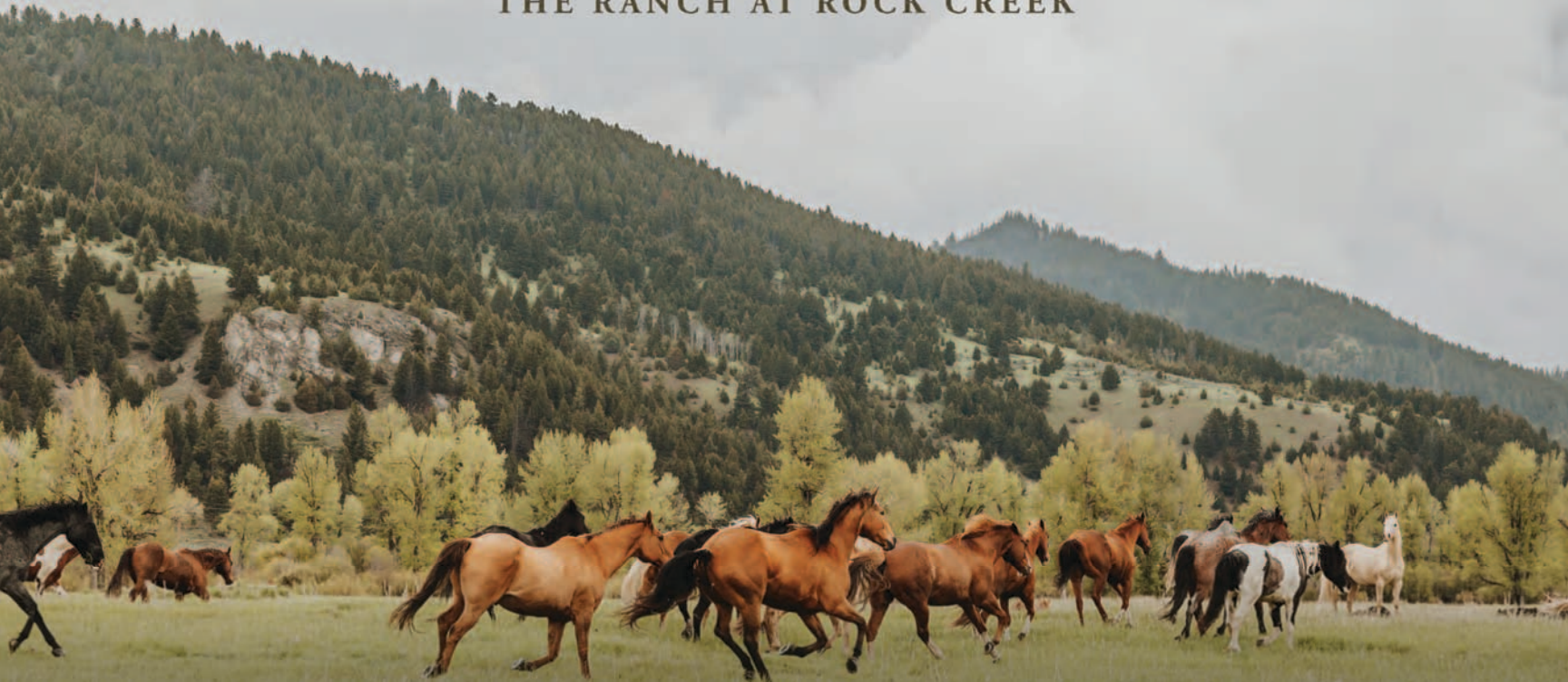
*“ We need the tonic of wildness...
We can never have enough of nature.”*

— Henry David Thoreau

**Arthur and Jill Kontos
are pleased to support
Monmouth Conservation Foundation**



THE RANCH AT ROCK CREEK



TheRanchAtRockCreek.com

Reservations: (877) 786-1545 | WELCOME@TheRanchAtRockCreek.com

Celebrating 46 Years  *of Land Preservation*

Thank you for joining us at Fall for Conservation 2023! This is MCF's 46th year working with our valued public and private partners to preserve land and protect and enhance natural resources throughout Monmouth County. We fondly remember and salute tonight's honoree, the late Jim Truncer, and we thank our generous hosts, Artie and Jill Kontos, for their longstanding support and for welcoming us back to Fairway Farm.

Your support drives our mission to protect the natural habitats, farmland, and open spaces which make our region so special. Our work is now more important than ever, with only 7% or 20,000 acres of land in Monmouth County remaining undeveloped and yet to be preserved.

We are approaching 10,000 total acres collaboratively preserved! Over the past year, MCF is proud to have helped facilitate the preservation of nearly 6 acres in Howell to expand Deerwood Park, in partnership with Howell Township; over 17 acres in Middletown along the Navesink River as an addition to Hartshorne Woods Park, in partnership with Monmouth County; and 124 acres in Millstone for recreation and open space, in partnership with the NJ Department of Environmental Protection (DEP) Green Acres Program, Monmouth County, and Millstone Township.

We also completed our pilot project with the US Department of Defense (DOD) through the REPI Program, working to safeguard land around Naval Weapons Station Earle. With our newly adopted 3-year strategic plan, which includes a renewed and expanded emphasis on educational outreach programming and sustainable stewardship, MCF will remain focused on our collective future, preserving our natural environment for future generations.

Working toward a long-term goal for every Monmouth County resident to have access to green space within 10 minutes' walking or biking distance from their homes, our team is passionate about our ongoing park development agenda. Current projects, being prioritized in underserved communities, include the citizen-led revitalization of Jackson Woods Park in Long Branch, establishment of new open space in Neptune Township, and the transformation of Red Bank's former landfill into an 8-acre waterfront park. We are proud of our critical role in the years-long effort to create Swimming River Park in Middletown, which opened this past May, and grant funding provided to create a 10,000-sq.ft. pollinator garden at Edgemere Park in Sea Girt.

Thank you again for your tremendous support over the years. We look forward to working together with you for many years to come!

“MCF is grateful to our many partners, including the Monmouth County Board of County Commissioners, Board of Recreation Commissioners, and Park System, US DOD, US Navy, NJ DEP Green Acres Program, NJ State Agriculture Development Committee, and municipalities and organizations throughout the region. We applaud our trustees and many generous patrons whose philanthropy and involvement power our mission.”

Cordially,



Matthew A. Cohen
President



William D. Kastning, AICP
Executive Director

MONMOUTH CONSERVATION FOUNDATION

WELCOMES YOU TO OUR



FALL for CONSERVATION *Cocktail Party*

HONORING

JIM TRUNCER (1936-2023)

FOUNDER AND DIRECTOR OF
MONMOUTH COUNTY PARKS FOR 58 YEARS

HOSTED BY

ARTHUR AND JILL KONTOS

SATURDAY . SEPTEMBER 23 . 2023

6:00 PM - 10:30 PM

FAIRWAY FARM . 381 COOPER ROAD . MIDDLETOWN . NEW JERSEY

Celebrating 46 Years of

CREATING PARKS . SAVING OPEN SPACE . PRESERVING FARMLAND
TEACHING ENVIRONMENTAL SUSTAINABILITY
SAFEGUARDING WATERWAYS . PROTECTING WILDLIFE

MCF

MONMOUTH
CONSERVATION

Keeping Monmouth Green
since 1977

Monmouth County's only land trust

9,090 acres of open space and
farmland preserved

includes > 4,500 acres or 25% of
Monmouth County Parks' 18,000 acres

1,100 acres of protected lands
stewarded through 46 easements

Just 7% (or 20,000 acres) of Monmouth
County land remains undeveloped
and get to be preserved

Open space enhances public health
and wellbeing, our economy, quality of
life, and overall sustainability

Mission

Monmouth Conservation Foundation's purpose is to acquire and preserve open space and farmland and conserve natural habitats throughout Monmouth County in support of outdoor recreation, agriculture, clean water, and wildlife for long-term sustainability.

Vision

To lead conservation and education efforts to preserve and protect our natural environment, so all individuals and communities have access to and can benefit from open space and nature for generations to come.



**JOIN OUR LAND STEWARDS
MONTHLY GIVING PROGRAM
FOR AS LITTLE AS \$5/MONTH**



JOIN MCF'S NEW MONTHLY GIVING PROGRAM!

As a monthly donor to MCF, you will join a very special group who supports land preservation all year long. For as little as \$5 per month, Land Stewards provide critical, recurring support that MCF can count on to drive our operations and conservation efforts.

We invite you to make a monthly gift within your capacity and help MCF to #KeepMonmouthGreen. Your recurring gift helps MCF protect the land we need and love, forever.

As a Land Steward, you will receive:

- Exclusive Members-only monthly email updates
- Recognition on MCF website
- Listing in MCF Annual Report
- Anniversary Gift



Honoring James J. “Jim” Truncer

(1936-2023)

Not many people know this, but Jim Truncer played an instrumental role in the founding of Monmouth Conservation Foundation.

In the 1970s, Jim invited thirty-five people to dinner and shared his vision for a nonprofit to work hand-in-hand with Monmouth County to preserve land and create parks. A local attorney, Chet Apy, acted as a moderator for Jim’s presentation during the dinner, which was modeled after a California state parks foundation.

Twenty or so of the dinner guests signed on to help, including Judith Stanley Coleman (1935-2010), who went on to become one of MCF’s co-founders. Michael Huber (1927-2009), MCF’s other co-founder, joined the effort shortly after. Jim acted as secretary to the incorporation, and a group of six to eight individuals served as incorporators.



PHOTO COURTESY OF MCPS

MCF was officially established in 1977 by this passionate group of citizens to acquire, hold, preserve, and protect the open lands, historic areas, and park and recreational areas of Monmouth County, New Jersey, together with any buildings located thereon. MCF began as a park foundation, but our founders – Judy, in particular – felt it should be a land trust. During the establishment phase, the organization changed names and direction to become the 501(c)(3) nonprofit organization it is today.

Nearly a half-century later, MCF is the County's only land trust, and our purpose is to acquire and preserve open space and farmland and conserve natural habitats throughout Monmouth County in support of outdoor recreation, agriculture, clean water, and wildlife for long-term sustainability. We work together with public and private partners – very often with Monmouth County – to preserve land in perpetuity, and to protect and enhance the natural resources in our communities.

We have assisted with the preservation of 9,090 acres overall in Monmouth County. Among these, we have helped to conserve over 4,500 acres of County parklands – 25% of Monmouth County Park System's (MCPS) current 18,000 acres, acting as a facilitator among stakeholders and partners and/or by contributing funding.

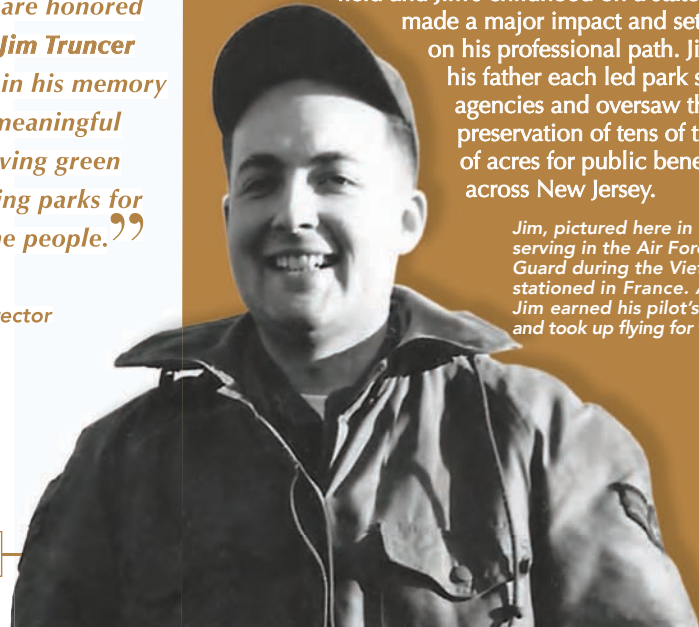
“We owe a great deal to Jim Truncer for his quiet leadership, diplomatic collaboration, and genuine commitment to land preservation. MCF wholeheartedly thanks Jim for being an MCF ex-officio board member and cherished partner to our organization for decades during his robust life of 86 years. We are honored to establish the Jim Truncer Memorial Fund in his memory to carry on his meaningful legacy of preserving green space and creating parks for the benefit of the people.”

— Bill Kastning
MCF Executive Director

Jim grew up at Parvin State Park in Elmer, New Jersey, where his father, Joseph J. Truncer (1907-2000) was the first superintendent. Jim spent his days riding his bicycle all around the Park visiting nearby farms, where he befriended older children living on the farmsteads. Some of the older children secretly took him up in the crop dusters – an activity that Jim's daughter, Becky, says sparked her father's love of flying.

Jim began his tenure with Monmouth County as a volunteer on the Board of Recreation Commissioners before becoming a park planner with the Planning Board in 1964 and then became the Park System Secretary Director in 1965, a position he held for 58 years, until his passing. Becky shared that her dad's first thought for his career may not have been park system administration, but his father's career in the field and Jim's childhood on a state park made a major impact and set Jim on his professional path. Jim and his father each led park system agencies and oversaw the preservation of tens of thousands of acres for public benefit, across New Jersey.

Jim, pictured here in 1962, while serving in the Air Force's Air Guard during the Vietnam Era, stationed in France. At age 70, Jim earned his pilot's license and took up flying for fun.





Father and son, Joseph and Jim Truncer

Both Joseph, in 1969, and Jim Truncer, in 1994, received the Cornelius Amory Pugsley Medal from the American Academy for Park and Recreation Administration (AAPRA) – the only father and son recipients in the award’s 95-year history. The Pugsley Medals are among the

most prestigious awards that recognize outstanding contributions to the promotion and development of public parks and conservation in the United States.

In addition to advising and helping to start MCF, Jim similarly facilitated the formation of the Friends of the Parks in 1993. Both local nonprofits directly support the Park System. In his Pugsley citation, Jim was described as “a champion of developing unique and successful partnerships and collaborations with non-profit organizations and public agencies to develop alternative funding and acquisition opportunities to benefit parks, recreation, and historic preservation.”

“We’re very lucky in Monmouth County to have what we have, but we didn’t get it by luck. Jim was able to bring partnerships together, between county government officials, professional staff, concerned community leaders, and private individuals.”

— Maria Wojciechowski
Executive Director of the
Monmouth County Friends of the Parks

Jim worked to establish the Commission for the Accreditation of Park and Recreation Agencies (CAPRA) and put his own agency – MCPS through the rigorous process in the first round of national review in 1994. MCPS achieved the nation’s first accreditation from CAPRA in 1994, a level of excellence still proudly held by the agency today.

Countless accolades mark Jim’s 58-year career with the Park System. Jim was a leader in establishing New Jersey’s first County Open Space tax in 1992. He earned the 2002 Distinguished Professional Award from the National Recreation and Park Association and the 2002 NJ Recreation & Park Association Administrative Excellence Award.



PHOTO COURTESY OF MCPS

LEFT TO RIGHT: MCF Trustee George Illmensee (1930-2016), Jim Truncer, Monmouth County Freeholder Tom Powers (1934-2016), Freeholder Director Harry Larrison (1926-2005), and Judith Stanley Coleman among dignitaries at the Dorbrook Recreation Area dedication in 1985.

Under his direction, MCPS grew from 350 acres on three parks – Holmdel, Shark River and Turkey Swamp – to over 18,000 acres of parkland, which includes 37 parks, six golf courses, and 148 miles of trails. The Park System also offers more than 5,000 activities, trips, and programs serving over 94,000 people each year. Monmouth County has been recognized as one of the nation’s best places to live, and the Park System, under Jim’s leadership, is a contributing factor to the distinction. MCPS is now recognized nationally and, arguably, internationally by those involved with parks.

When Jim celebrated his 50th year as director of MCPS in 2016, approaching his 80th birthday, he was the longest-serving county employee. On the occasion, he was asked if retirement was in the future, and he replied, “When they close the lid,” appearing serious. He lived out his life committed to his important work.

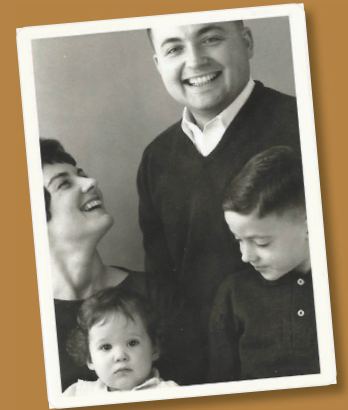
He was fiercely dedicated, modest, and selfless. Jim was renowned for always thinking of people – the users of our parks and public open spaces – in his leadership over the Park System. He was detailed and meticulous. While visiting Park System sites, he was known to be the first one to pick up a piece of litter on the ground or ask his late wife, Ramona, of 63 years to check the ladies’ restroom for cleanliness. On one of his last drives with daughter, Becky, Jim stopped in and wanted to see how the driveway was coming at one of the Park System golf courses.

When asked about his favorite County park, Jim struggled to answer – much like being asked to choose a favorite child. Jim’s family recalls him having a special place in his heart for each park, likening them to his babies. He once shared with MCF staff that he loved Historic Walnford. Jim lived in Allentown, close to Walnford in western Monmouth, and was familiar with the property before it became part of the Park System. He and MCPS tried to buy the property to make it a County park but were unsuccessful. Ed and Joanne Mullen later gifted it to the County, and it is now one of the historic sites located along the Upper Freehold Historic Farmland Scenic Byway.

“I tell our people we’ve been blessed. Beautiful county. To raise a family, to have a business. When we have visitors, they’re surprised parts of New Jersey are so beautiful. We’re blessed we’ve had the support of the public, our political leadership.”

— Jim Truncer

upon his 50th Anniversary with MCPS



Ramona and Jim Truncer with children Rebecca “Becky” and James

Jim is beloved by many and remembered for his strong character. He was humble, thoughtful, and honest – a true gentleman. Becky remembers her dad always making her and her brother, James, feel like they could do anything. Jim encouraged and taught them to be resourceful self-starters and to do things the right way. He was an excellent role model and gifted storyteller. He was loved by his staff and respected by the Board of County Commissioners (formerly known as Freeholders) and Board of Recreation Commissioners as a visionary.



Working Grist Mill at Historic Walnford

Jim Truncer Memorial Fund

“[The] history of the Monmouth County Park System is dedicated to the men and women who have given their time and talents to create a nationally recognized open space, parks and recreation agency to serve their fellow citizens. Credit for the growth and success of the Park System belongs to many individuals... farsighted County leaders, dedicated employees, generous donors, and supportive volunteers and non-profit organizations that enhance the services we provide to the public. Every successful land preservation story and every beautiful park or recreation activity... is the result of the actions of people who worked for the common good...”

— Jim Truncer
upon the 50th anniversary
of Monmouth County Parks System



James J. “Jim” Truncer (1936-2023)
Director of Monmouth County
Park System for 58 years

As is apparent from Jim’s statement and is obvious to anyone who encountered him throughout his nearly-six-decade career, Jim was never one to take credit, and he always thought of others. Under his leadership, the footprint of Monmouth County Parks grew by a remarkable 5,000 percent. With every acre added; every park created; each trail and feature added, Jim considered the needs of and impact on our community and its citizens.

To carry on his meaningful legacy, we invite you to support the Jim Truncer Memorial Fund at MCF, preserving green space and creating parks for the benefit of the people throughout Monmouth County, in line with MCF’s mission.



Breathtaking Fairway Farm was preserved through a conservation easement donated to MCF in 2007 by the late Anne Haskell Ellis in her last will and testament. It was previously part of Oak Hill Farm, then the Ellis Farm; known to some as the Haskell Farm, formerly called the Aulde House.



PHOTO BY ANGIE LAMBERT PHOTOGRAPHY

*Artie and Jill
Thank You*

for graciously hosting

FALL for
PRESERVATION

and for your commitment to MCF's work to preserve green space throughout Monmouth County. Your support of our mission and many other charitable causes elevates our quality of life and sets a leading standard for others to follow.

— MCF TRUSTEES AND STAFF



EVENT SPONSORS

UNDERWRITER

Arthur Kontos Foundation

DONOR

Lily and Peter Ream Kemmerer

NATURE & WILDLIFE ADVOCATE

Ray Catena
Joan Rechnitz

LAND PRESERVATION ALLY

Liz and Charlie Komar
Mary Jane and Richard Kroon
Vikki and Bill Marraccini/
Sonia and Christian Zugel
Gloria and Len Nilson
Shorepoint Distributing Company, Inc.
John R. and Mary Tassini

FARMLAND & GREEN SPACE PATRON

Sarah and Benson Chiles
Montecalvo & Bayshore Family of Companies
Geri Skirkanich

PARK DEVELOPMENT SUPPORTERS

Senator Jennifer Beck
The Grove at Shrewsbury A Property
Imagined and Nurtured by Metrovation
Lomurrow Law
Monmouth Medical Center/
RWJBarnabas Health

Sarah Orsay and Russel Montalbano
NJ Natural Gas
Karen and Chris Rodriguez
Cindy and Michael Rubin
Seals Eastern
Triple L Farms

OPEN SPACE FRIENDS

Anonymous
Bell Works
Brookdale Community College
Lorraine and Jerry Buffalino
Commissioner Lillian G. Burry
Canyon Pass
Andy R. Coeyman and
Janet Colyard
Leslie and Matthew A. Cohen
Genevieve and Derek DeBree
Anne and Larry Fink
Sarah and Douglas Fleming
Karen Goldblatt
Nancy and Tom Gravina
Donna and David J. Hoder
Cathy and William Ingram
Nora and Kenny King

Robin and John Klein
Monmouth University
The Munshine Group, LLC
Senator Declan O'Scanlon
Trudy and Charlie Parton
Monica and John L. Ryan
Frank Scheuer
Spiro Harrison & Nelson
Carol Stillwell & Stillwell-Hansen
Nicole and Matt Taetsch
Missy Van Buren and Tom Brown
Gerri and Richard O. Venino Jr.
The Wickersham Family
Chryssa Yaccarino, Esq. &
Ronald L. Reisner, J.S.C. Ret.
Louis and Susan Zinterhofer

FLORAL UNDERWRITER

Liz and Adam Rechnitz

IN KIND DONOR

The Annabel Foundation
Angie Lambert Photography
Land and Sky Designs
Alex and Heather McKeown
Privetera Florist Landscape and
Nursery
Shorepoint Distributors
Sue Sweeney Beil Fine Art

LIVE AUCTION CONTRIBUTORS

Senator Jennifer Beck
Chapel Beach Club
Jim and Marybeth Manley,
owners of The Ranch At Rock Creek
The Mulheren Family
Scothigh Estates

UNDERWRITER

Arthur Kontos Foundation

DONOR

Lilly and Peter Ream Kemmerer

NATURE & WILDLIFE ADVOCATE



LAND PRESERVATION ALLY



FARMLAND & GREENSPACE PATRON



PARK DEVELOPMENT SUPPORTERS



OPEN SPACE FRIEND





SILENT AUCTION DONORS

A Kneaded Vacation
"Anchor Jam" Boat Rides
Barlow's
Alexander Baugh
Bespoke Travel Services
Holly Boylan Flego
Luba Caruso
Course & Court
Curated Passage Travel
Delicious Orchards
Kathy Donnelly
Endless Crafty Creations LLC
Barbara Etter
Sarah Fleming
Jersey Shore Blue Claws
Jon Lori Salon
Jill Kerwick, Artist

Louise Larsen, Independent Educational
Consultant at August Consulting
Lynne Mangini
Monmouth County Park System
Monmouth University Center for the Arts
Roseann Paone
Peace, Love, World
Prown's Windows and Doors
Red Gables Festival
Red Horse by David Burke
Karen Rodriguez
Danielle Rugeiro
Sickles Market
Sue Sweeney Beil Fine Art
Triumph Restaurant & Brewery
Trump National Golf Club
Cindy Weber-Cleary



2023
FALL for
CONSERVATION
Cocktail Party

EVENT COMMITTEE

Jennifer Beck
Holly Boylan Flego
Sarah and Benson Chiles
Leslie and Matthew A. Cohen
Tracy Cole
Cathy and Steve Cottrell
Jamie Druckman
Aidan Ehrenberg
Barbara Etter
Sarah Fleming
Ray and Jackie Foley
Marti Huber
Tina Kastning
Nora King
Robin Klein
Arthur and Jill Kontos
Angie Lambert
Claire Lonagan
Lynne Mangini
Heather McKeown
Veronica and Chris Meagher
Valerie Montecalvo
Gloria and Len Nilson
Sarah Orsay
Roseanne and John Paone
Liz and Adam Rechnitz
Anna-Bain Reynolds
Karen and Chris Rodriguez
Danielle Ruggiero
Monica and John L. Ryan
Robert and Leslie Sickles
Tori Sickles
Cindy Weber-Cleary
Susan and Louis Zinterhofer

EXECUTIVE COMMITTEE

Matt Cohen, *President*
Sarah Orsay, *Vice President*
Aidan P. Ehrenberg, *Secretary*
Chris Meagher, *Treasurer*
Holly Boylan Flego
W. Benson Chiles
Larry Fink, *At Large*
Ronald Gumbaz, *At Large*
David J. Hoder
Valerie Montecalvo, *At Large*
Gloria Nilson
Chris Rodriguez
Richard O. Venino Jr., *At Large*

STAFF

William D. Kastning, AICP
Executive Director
Karen Keene
Director of Development and Communications
Jena Cosimo
Director of Acquisitions
Kathleen Kenney
Development and Event Marketing Manager
Anne Delaney
Financial Records and Operations Manager

TRUSTEES

Joe Barris, *Ex-Officio*
Jennifer Beck
Jerry Buffalino
Lillian Burry Cty.
Commissioner, *Ex-Officio*
Leonard Cohen
Tracy Cole
Derek S. DeBree
Daniel L. Hertz III
Nora King
Tony MacDonald
Martin J. McHugh
Heather McKeown
Elizabeth Rechnitz
Michael Rubin
Robert H. Sickles
Andrew Spears, *Ex-Officio*
John R. Tassini
Cindy Weber-Cleary
Erik Yngstrom

TRUSTEES EMERITI

Martha Huber
Peter R. Kemmerer
John L. Ryan
Frank Scheuer
Mary Tassini
James Truncer*

*DECEASED



MONMOUTH CONSERVATION FOUNDATION



STRATEGIC PLAN

2024-2026

PLANNING FOR THE FUTURE
OF MONMOUTH COUNTY

In the 46 years since MCF's founding, there have been pivotal moments that have made it a superior and stronger organization. Today, we are excited to share the latest such milestone with you as we look to the future: a just-completed, thoughtful and thorough Strategic Plan that will focus our work going forward and ensure we are meeting the changing needs of those we serve and of MCF itself. Three crucial priorities were identified and plans developed to address each:

MONMOUTH CONSERVATION FOUNDATION



STRATEGIC PRIORITY #1: CORE MISSION-DRIVEN WORK

Preserve remaining, eligible undeveloped land in Monmouth County and effectively steward existing and future easements.

Future site of Sunset Park on the Swimming River in Red Bank's west side, where MCF is working to transform the Borough's former landfill into an 8-acre community park



FOCAL AREAS:

- Continue park development in underserved communities
- Expand REPI Program partnership with US Department of Defense to preserve land buffering Naval Weapons Station Earle

2

STRATEGIC PRIORITY #2: EDUCATIONAL OUTREACH

Establish a hands-on education and outreach plan to reach Monmouth County residents of all ages, focused on environmental sustainability and quality of life issues related to our mission.

FOCAL AREAS:

- Acquire and outfit a Mobile Education Unit for on-the-road environmental sustainability education
- Establish an MCF Preserve and Education Center



PHOTO BY TINA COLELLA PHOTOGRAPHY

Children's Educational Programming at
MCF's Spring for Conservation Family Day, 2021

STRATEGIC PRIORITY #3: FUNDRAISING & COMMUNICATIONS

MCF will strengthen its image and identity, and build capacity through communications, marketing, engagement, and fundraising.

FOCAL AREAS:

- Achieve "For Monmouth For Our Future" Comprehensive Campaign Goals
- Achieve Reaccreditation through Land Trust Accreditation Commission

3



TO LEARN MORE AND READ THE FULL REPORT, VISIT WWW.MONMOUTHCONSERVATION.ORG/STRATEGICPLAN

What will your LEGACY be?

Land preservation is one of the only things that is truly permanent.



Will you help create a park, preserve one of the few remaining farms, protect a waterway for safe drinking water, or safeguard a natural habitat for wildlife? By including Monmouth Conservation Foundation in your estate plans, you'll join our founders' vision of saving open space for generations to come.

The gift of your legacy will make a difference for tomorrow, and forever. Imagine the impact your support could make.



The Nilson Society, named in recognition of the extraordinary contributions of our longtime supporters, Gloria and Len Nilson (*pictured here*), has been created to honor those who include MCF in their estate plans, just as Gloria and Len have done.



TO LEARN MORE OR DISCUSS YOUR LEGACY, PLEASE CONTACT:

William Kastning, AICP, *Executive Director*
wkastning@monmouthconservation.org

Karen Keene, *Director of Development and Communications*

kkeene@monmouthconservation.org

732.671.7000

WWW.MONMOUTHCONSERVATION.ORG/NILSONSOCIETY



MONMOUTH CONSERVATION FOUNDATION

HOLIDAY STYLE LUNCHEON & SHOPPING SPREE



WEDNESDAY . NOVEMBER 29 . 2023
THE SHADOWBROOK AT SHREWSBURY . NEW JERSEY

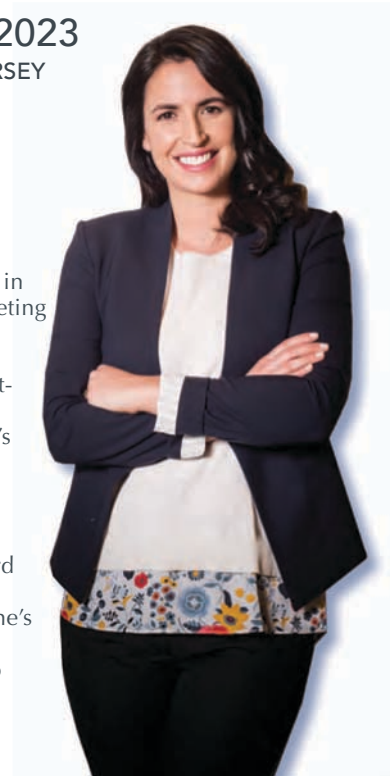
11:00 AM TO 4:00 PM

Featuring Guest Speaker

CAROLINE JONES

Senior Vice President of Jersey Mike's Franchise Systems, Inc.

Throughout her 21-year career at Jersey Mike's, Caroline Jones has worked in nearly every aspect of the company. She spearheaded grand opening marketing strategies for new locations and led the systemwide redesign across the country, playing an important role in Jersey Mike's ongoing expansion to more than 2,500 locations nationwide. Jersey Mike's was named the fastest-growing fast-food chain in America by QSR magazine in 2022 and ranked #3 on Entrepreneur's 2023 Franchise 500. As the facilitator for Jersey Mike's charitable giving, Jones built a standardized platform for the company's annual Month of Giving campaign – an initiative that has raised more than \$67 million since 2011 for charity partners. She also led the creation of The Sub Above Fund to support members of the Jersey Mike's family in times of crisis. Beyond Jones' leadership role at Jersey Mike's, she is a board member of the 2026 Special Olympics USA Games and passionate about environmental conservation. In 2018, she was named one of QSR magazine's Young Leaders to Watch. Her unique perspective on the marketplace and the company also comes from having had the extraordinary opportunity to shadow Jersey Mike's founder – and her father – Peter Cancro.



the **D**
SAVE *the*
SPREE!

**FOR ADDITIONAL DETAILS, RESERVATIONS,
SPONSORSHIP, AND UNDERWRITING
OPPORTUNITIES, OR VENDOR INQUIRIES,**

PLEASE CONTACT

KATHLEEN KENNEY AT 732.671.7000 OR

KKENNEY@MONMOUTHCONSERVATION.ORG.

WWW.MONMOUTHCONSERVATION.ORG/HOLIDAY



JIM TRUNCER

*Modest but Visionary Leader
58 Years at the Helm of the Park System
18,000 Acres and Counting
For Everyone's Enjoyment*

— Tina and Bill Kastning

A TRADITION OF *Quality & Service*

SINCE 1925



DEARBORN
market
Fine Food & Garden Center

Our own locally grown vegetables are in our produce department throughout the fall. They are harvested and freshly picked daily from our farm right behind our store. You can taste the fresh, farm-to-table deliciousness.

We are proud to grow the finest plants in our year-round, state-of-the-art greenhouses, and feature them in our fully stocked garden center.

Dearborn Market is a one-stop-shop with a *full-service grocery store* and *garden center* located conveniently on Highway 35 in Holmdel, NJ. Starting as a roadside farm stand in 1925, today Dearborn Market includes a 5,000 sq. ft. *delicatessen*, a *gourmet kitchen*, 11,000 square foot *greenhouses & garden center*, fresh *bakery* and so much more!

2170 Highway 35 ♦ Holmdel, NJ

Phone: 732-264-0256 ♦ Web: dearbornmarket.com

Hours: Sunday - Saturday, 8am - 8pm



Best Wishes

from your friends at



ShopRite

Saker ShopRites

Richard Saker, *President and CEO*

Your World Class ShopRites

Aberdeen
Bayville
Belmar
Bordentown
Bound Brook
Branchburg
Brick Twp.
East Brunswick
East Windsor

Edison
Ewing
Fischer Blvd., Toms River
Freehold
Hamilton Marketplace
Hamilton Square
Hazlet

Howell
Jackson
Lacey Twp.
Lawrenceville
Manahawkin
Manchester
Marlboro Twp.

Middletown
Montgomery Twp.
Neptune
North Brunswick
Pennington
Piscataway
Rt. 37, Toms River

Sayreville
Shrewsbury
Somerville
South Brunswick Twp.
South Plainfield
Wall Twp.
Waretown
West Long Branch
Woodbridge



ShopRite Wine & Spirits
Middletown



ShopRite Wine & Spirits
Freehold & Neptune

MANY THANKS FOR VOTING

SHOPRITE "BEST SUPERMARKET"

Asbury Park Press, Home News Tribune, Courier News and Trentonian Readers' Choice Awards

A close-up photograph of a hummingbird hovering in front of a cluster of honeysuckle flowers. The bird is positioned in the lower-left quadrant, facing right towards the flowers. Its wings are blurred from motion. The flowers are a mix of vibrant pink and bright yellow, with long, tubular shapes. The background is filled with lush green leaves and stems, creating a dense, natural setting. The overall lighting is soft and natural, highlighting the textures of the bird's feathers and the petals of the flowers.

BEST WISHES

— Ric and Gerri Venino

Celebrating 46 Years



of Land Preservation



The Rumson
Country
Day School
proudly
supports the
Monmouth
Conservation
Foundation.

Take a tour! Connect with us.

732.842.0527 • www.rcds.org f t i

35 Bellevue Avenue • Rumson, NJ 07760

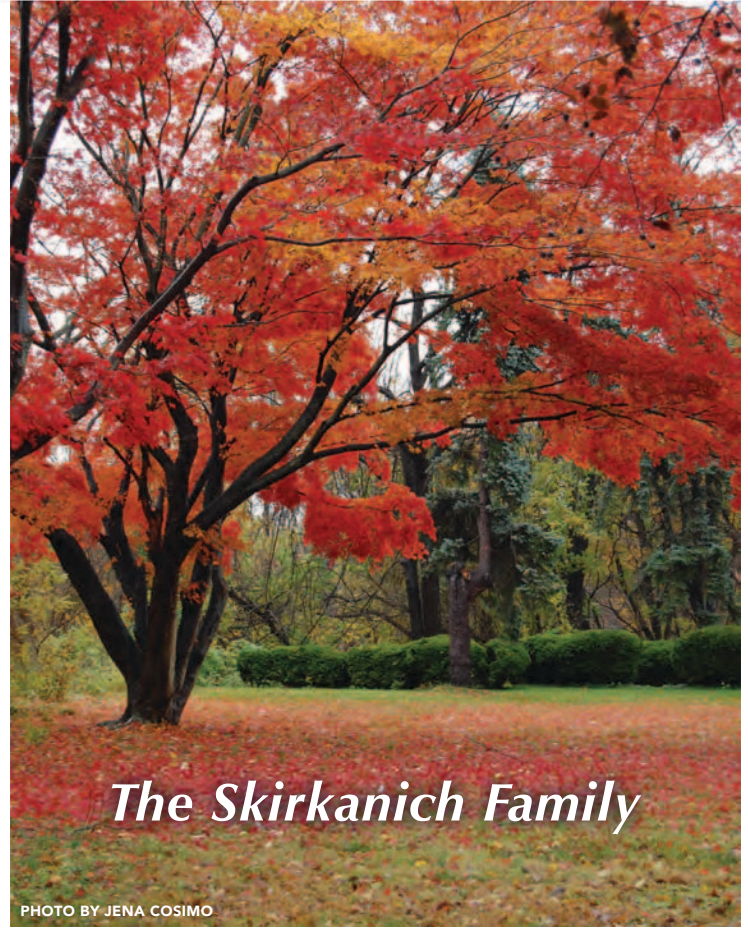


THE
RUMSON
COUNTRY DAY SCHOOL
Truly Great N-8



*Morning on the
Swimming River Reservoir*

— Michael Rubin



The Skirkanich Family

PHOTO BY JENA COSIMO

A hearty *thank you* to friends old and new and my many loyal clients.



GLORIA NILSON

Broker Associate

C: 908.461.8152

O: 732.842.6009

gloria.nilson@foxroach.com
mansions2cottages.com

“

I owe my years of success in Real Estate and beyond to all of you and look forward to continuing to serve you, our wonderful community and my charitable endeavors for years to come.

- Consistently in the top 10% of all Berkshire Hathaway HomeServices agents nationwide
- Monmouth Conservation Honoree in 2022, with my husband Len, for years of dedicated service protecting our greenspace.
- Monmouth Medical Center Foundation board member for 18 years
- Long serving former board member of Monmouth Museum
- Monmouth University Business Council Member Emeritus
- Creating the premier Real Estate brand in Monmouth County, Gloria Nilson Realtors

BERKSHIRE HATHAWAY
HOMESERVICES

FOX & ROACH, REALTORS®

An aerial photograph of a lush, green landscape. A winding river flows through the scene, surrounded by dense forests and open green spaces. The sky is clear and bright, suggesting a sunny day. The overall scene is vibrant and natural.

THANK YOU
Monmouth Conservation Foundation
for honoring his legacy.

***WE ARE ALL BENEFITING FROM THE TIRELESS
EFFORTS OF JIM TRUNCER AND HIS LEADERSHIP
IN THE MONMOUTH COUNTY PARKS SYSTEM.***

— Steve and Cathy Cottrell

“ WE THANK AND REMEMBER
JIM TRUNCER
for his great leadership of the
Monmouth County Park System. RIP.”

— Jack and Mary Tassini





**THANK YOU
MONMOUTH CONSERVATION FOUNDATION
FOR YOUR SUPPORT!**

CHRISTIAN PETER
THE COMPETITIVE ADVANTAGE COMPANIES PRESIDENT
FORMER NY GIANTS/ NFL ALUMNI PRESIDENT



TCAC  **THE COMPETITIVE ADVANTAGE COMPANIES**

COMPETITIVE ADVANTAGE PROPERTY AND CASUALTY **COMPETITIVE ADVANTAGE BENEFITS**

P&C coverage available to small, mid-size, and large businesses. Health, Dental, Vision, Life & Disability Group Coverage.

COMPETITIVE ADVANTAGE LIFE & ANNUITY

Comprehensive plans with reasonable premiums to offer the strongest form of stability.

PERSONALIZED INSURANCE SERVICES SPECIALIZING IN COMMERCIAL, GROUP AND INDIVIDUAL NEEDS.



54 Broad Street, Suite 200 Follow us:
Red Bank, NJ 07701
(752) 704-7655
info@thecompanies.com



Monmouth Medical Center proudly supports
Monmouth Conservation Foundation.

RWJBarnabas HEALTH

Monmouth Medical Center

rwjbh.org/monmouth

Let's be healthy together.



Thank You

to the

**MONMOUTH CONSERVATION
FOUNDATION**

for all you do for our community!!

Visit VinGopalCivic.org or email at VinGopalCivic@gmail.com for more information.

PAID FOR BY THE VIN GOPAL CIVIC ASSOCIATION, 97 APPLE STREET, TINTON FALLS, NJ 07724



*“The Meagher Family
is grateful to MCF for 46 years
of preserving open space
for our families and future generations”*

— Veronica, Chris, Isabelle, and Sophie

Law Offices
PAONE, ZALESKI & MURPHY

DIVORCE & FAMILY LAW

Our Partners are Certified Matrimonial Attorneys



120 Maple Avenue • Red Bank
732.750.9797
visit us at www.paonezaleski.com

ACFTL

John P. Paone, Jr.

Diplomate of
the American College
of Family
Trial Lawyers

“ *FOR LILLY* ”



Lilly and Peter R. Kemmerer



WHEN WE VISIT OUR BEAUTIFUL MONMOUTH COUNTY PARKS, WE THINK OF

JIM TRUNCER

WITH GRATITUDE FOR HIS STEADFAST VISION AND LONGSTANDING
PARTNERSHIP WITH MONMOUTH CONSERVATION FOUNDATION.

— Anne and Larry Fink



134 Pearl Street Red Bank • New Jersey 07701
www.SealsEastern.com



WE THANK
JIM TRUNCER

*for his many years of dedication
to the Monmouth County Park System.*

— Chris & Karen Rodriguez



LOMURROLAW

T R I A L L A W Y E R S

TRIAL LAWYERS
FIGHTING FOR *YOU*



PHOTO BY MATTHEW HOCK

*In memory of
Jim Truncer
and his
dedication to
Monmouth County Parks.*

4 Paragon Way, Suite 100 | Freehold, NJ. 07728

732-482-9285 | www.lomurrolaw.com

Erik Yngstrom, Esq.



The Kroon and Chiles Families

Celebrating 46 Years



of Land Preservation



In support of
**Monmouth
Conservation
Foundation**



If you can't be in
awe of Mother Nature,
there is something
wrong with you.

Alex Trebek



In honor of Jim Truncer and his commitment to
Monmouth County Parks. Our appreciation to MPC Team,
Board of Trustees and supporters for all you do to help keep
Monmouth County open spaces safe and beautiful.

Robin & John Klein



*Off Premise-Catering,
Floral & Decor*

BLOOME & THORNE
FLORAL DECOR DESIGN

Instagram: [instagram.com/bloomeandthorne](https://www.instagram.com/bloomeandthorne)
Facebook: [facebook.com/bloomeandthorne](https://www.facebook.com/bloomeandthorne)
bloomeandthorne.com 908.680.6221

davidellis
EVENTS

Instagram: [instagram.com/davidellisevents](https://www.instagram.com/davidellisevents)
Facebook: [facebook.com/davidellisevents](https://www.facebook.com/davidellisevents)
davidellisevents.com 973.539.3000



Jim Truncer's contributions to Monmouth Conservation Foundation were his dedication to open space, his integrity to its mission and, most important, his vision for the future of Monmouth County's beautiful landscape from our rolling hills and farmlands to our ocean shore.

MANY THANKS FOR ALL HE HAS DONE FOR OUR COMMUNITY!

— Nancy and Michael Del Priore



Morgan Stanley

Proud Supporter

The Ryan Group at Morgan Stanley is proud to support Monmouth Conservation Foundation.

David B. Nelson Jr. CFP®

Senior Vice President
Financial Advisor
NMLS #1274583

James P. Gallagher

Vice President
Financial Advisor
NMLS #1262049

Christopher Parmer

Vice President
Financial Advisor
NMLS #533847

The Ryan Group at Morgan Stanley

1030 Broad Street | Shrewsbury, NJ 07702
855-825-1770 • david.b.nelson@morganstanley.com
advisor.morganstanley.com/the-ryan-group-28213019

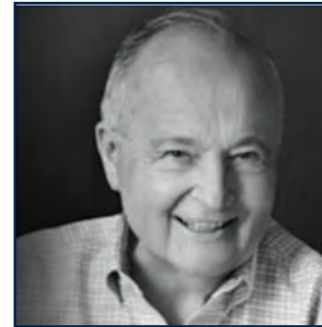
CFP Board owns the marks CFP®, CERTIFIED FINANCIAL PLANNER™, and CFP® (with plaque design) in the U.S.

© 2023 Morgan Stanley Smith Barney LLC. Member SIPC.
SUP021 CRC 5748767 06/23 CS 711289 06/23

“I guess I’d say that what happens today was thought about and was based on what somebody did twenty years ago... you have to think of that horizon of twenty plus years. If we don’t opportunities are lost.”

— James Truncer

Director of Monmouth County Park System
September 5, 2000



Thank You.
It is our privilege to honor your remarkable life.

— Senator Jennifer Beck and Daniel Shields

Sue Sweeney Beil Fine Art



suesweeney414@gmail.com . 732-850-5895



PROUD TO SUPPORT
the Monmouth Conservation Foundation
Thank you to Jim Truncer for his vision
and incredible legacy!



Thomas A. Arnone
Monmouth County Commissioner
Director



Shaun Golden
Monmouth County Sheriff



Christine Giordano Hanlon
Monmouth County Clerk

*Paid for by Friends of Tom Arnone for Commissioner,
Friends of Shaun Golden for Sheriff & Christine Hanlon for County Clerk*

Honoring
Jim Truncer
and his love
of outdoor
spaces.

METROVATION

Inspired Spaces
Since 1987



VOLUNTEERS NEEDED!
*Join the citizen-led Friends of Jackson Woods in the
ongoing revitalization of Jackson Woods Park in
Long Branch. All ages and abilities are welcome!*
Work Days: Tuesdays & Fridays: 9 am to 12 pm



www.monmouthconservation.org/jackson-woods



Integrating technology into the built environment to improve the human experience.

LIGHTING DESIGN & CONTROL

SMART ENERGY MANAGEMENT

AUTOMATED SHADES

CLIMATE

AUDIO

VIDEO

NETWORKS/WIFI

Blackpoint Technology proudly supports the Monmouth Conservation Foundation

BLACKPOINTNJ.COM

When you're ready to make a difference,
we're ready to help

We are proud to support the Monmouth Conservation Foundation.



Karen Rodriguez, CFA®
Wealth Management Advisor
Senior Portfolio Advisor
732.450.4008
karen.d.rodriguez@ml.com

Merrill Lynch Wealth Management
77 Broad Street
Red Bank, NJ 07704
fa.ml.com/karen.d.rodriguez



Merrill Lynch, Pierce, Fenner & Smith Incorporated (also referred to as "MLPF&S" or "Merrill") makes available certain investment products sponsored, managed, distributed or provided by companies that are affiliates of Bank of America Corporation ("BofA Corp."). MLPF&S is a registered broker-dealer, registered investment adviser, Member SIPC and a wholly owned subsidiary of BofA Corp.

Investment products: **Are Not FDIC Insured** **Are Not Bank Guaranteed** **May Lose Value**

The Bull Symbol and Merrill are registered trademarks of Bank of America Corporation.

CFA® and Chartered Financial Analyst® are registered trademarks owned by CFA Institute.

A Senior Portfolio Advisor can help clients pursue their objectives by managing on a discretionary basis custom investment strategies, selecting from a wide range of Merrill model portfolios and third-party investment strategies.

© 2023 Bank of America Corporation. All rights reserved.

MAP5448947 | AD-08-23-0161 | 470945PM-0323 | 08/2023



***CONGRATULATIONS
to MCF on another successful
year of preserving and
protecting open space
and creating parklands in
Monmouth County!***

***In fond remembrance of our
dear friend, Jim Truncer, who
dedicated his life to enriching
the lives of our community
through his continuous mission
of expanding the Monmouth
County Park System.***

**— The Annarella-Flego Family
and
Shore Point Distributing Co., Inc.**





PROUDLY SUPPORTING MONMOUTH CONSERVATION FOUNDATION

SUPPORTING LAND AND CONSERVATION
EFFORTS AS THE THE NUMBER ONE BROKER
SUCCESSFULLY SERVING THE LUXURY HOME
MARKET IN BEAUTIFUL MONMOUTH COUNTY*

**BERKSHIRE
HATHAWAY**
HOMESERVICES

FOX & ROACH,
REALTORS®

EVERYTHING YOU NEED IN

MONMOUTH COUNTY Holmdel, Middletown, Ocean Township,
Rumson, Shrewsbury, Spring Lake, Wall Township

OCEAN COUNTY Lavallette, Toms River

MERCER COUNTY Hopewell Valley,
Princeton, Princeton Junction, Robbinsville

732-517-3012 . FOXROACH.COM

“**CONGRATULATIONS**

*on preserving
the Delaney Property*”

ARTHUR J. LEHMAN, MAI

Real Estate Valuation & Consulting

732-223-3380

Thank you.

Jim's vision and dedication to preserving the open land in Monmouth County were truly commendable and amazing. Thanks to his efforts, everyone can now enjoy the natural beauty it offers.



By seamlessly integrating advanced functional movement, premium molecules, and cutting-edge technology, Dr. Pam empowers patients to embark on a transformative journey towards optimal health and longevity.

**Work with ageless
longevity expert, Dr. Pam!**
Complimentary Consult
for the first 5 people
to schedule



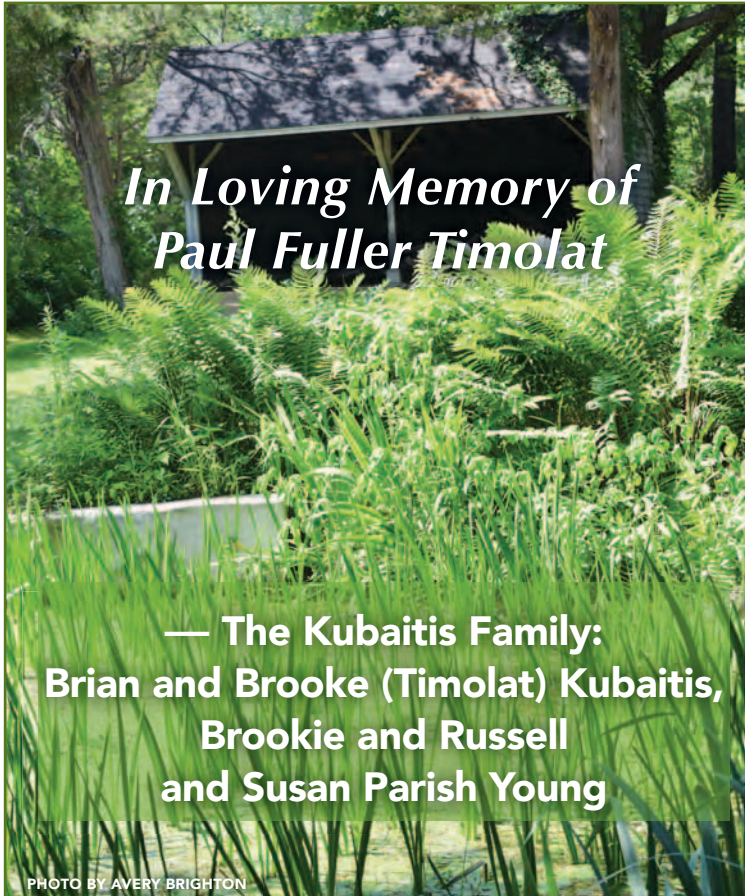
732-842-7004
DrPamWilson.com



*Few People Have Improved the Quality of Life
Significantly and Permanently as did*
Jim Truncer

*His Legacy Will Continue with Your Support
to Preserve More Open Space*

— Vikki and Bill Marraccini
and Sonia and Christian Zugel



*In Loving Memory of
Paul Fuller Timolat*

— The Kubaitis Family:
Brian and Brooke (Timolat) Kubaitis,
Brookie and Russell
and Susan Parish Young

PHOTO BY AVERY BRIGHTON



OceanFirst Foundation
proudly supports

*Monmouth Conservation
Foundation*

and the

*Fall for Conservation
Cocktail Party*



975 Hooper Ave. Toms River, NJ | 732.341.4676 | www.oceanfirstfdn.org

A photograph of a turtle, likely a Common Snapping Turtle, resting on a dark, mossy rock in a shallow stream. The water is clear, and the surrounding environment is lush with green foliage and branches. The text is overlaid on the top half of the image.

SCHAFFER CULLEN

CAPITAL MANAGEMENT

Jim Truncer's contribution to Monmouth County Park and the National Park Systems can not be measured. It will carry forward to inspire others to follow in his foot steps.



The China Cabinet recognizes the lifelong commitment of

Honoree Jim Truncer

Founder of the Monmouth County Parks System

Crystal ✦ American Bar ✦ China ✦ Frames ✦ Giftware ✦ Jewelry ✦ Home Décor



7 West River Road ✦ Rumson, NJ ✦ 732-842-1260

@chinacabinetrumson ✦ chinacabinetrumson.com

MCF
MONMOUTH
CONSERVATION
FOUNDATION



**RUMSON
WINE & SPIRITS**

5 West River Road Rumson

732-842-0552

www.rumsonwineandspirits.com

MCF
MONMOUTH
CONSERVATION
FOUNDATION

**Rumson Wine & Spirits Congratulates the Family
of this year's Monmouth Conservation Foundation**

Honoree Jim Truncer

Founder & Director of the

Monmouth County Parks System



A serene landscape photograph of a pond in a forest. The water is dark and still, reflecting the surrounding greenery. Numerous fallen leaves, mostly light green and yellow, are scattered across the surface of the pond. The foreground is framed by out-of-focus branches and leaves, some showing early autumn colors. The background is a dense wall of trees and bushes, creating a sense of being deep within a wooded area.

Liz and Charlie Komar

Celebrating 46 Years



of Land Preservation



**WE REMEMBER
JIM TRUNCER**
*with deep gratitude for his
many decades of dedicated service.*

— The Orsay Montalbano Family



The Mosley Family

PHOTO BY MARCELLA SHOOK

MONTECALVO & BAYSHORE

Family of Companies

Preserving Natural Resources Through Recycling



*In Honor of Jim Truncer
Thank you for your many years of service to Monmouth County*



*Valerie and Frank Montecalvo proudly support
Monmouth Conservation Foundation*

Corporate Offices
1041 NJ-36, Suite 200
Atlantic Highlands NJ 07716

www.bayshorerecycling.com
732-738-6000

Facility
75 Crows Mill Rd
Keasbey NJ 08832



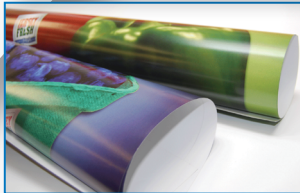
Yorkanis & White, Inc.

Professional Land Surveying

Commercial • Topographical • Riparian • FEMA

**23 Village Court
Hazlet, NJ 07730
732-888-3211**

*Thank you to the Monmouth Conservation Foundation
for preserving so much of our open space in Monmouth County.*



ASSOCIATES, INC.

**Award-Winning
Full Color Printing,
Digital Printing,
Design, Binding,
Distribution and Promotion**

**Direct to Plate Technology
Utilizing Macintosh and PC Platforms**

Full Service Design

*Serving the Tri-State area
for over 40 years*

**Jersey Printing Associates • 153 First Ave., Atlantic Highlands, NJ 07716
732.872.9654 • jerseyprinting.com**

CONNECTED COOKING

with *Chef*
Darren

Join Chef Darren on a conscious culinary adventure centered around CONNECTION. With a focus on plant-forward cuisine, we'll change the way you see (and eat) fruit & vegetables while helping you lead a healthier, more mindful life. Events include interactive in-person cooking classes, farm-to-table dinners, and other creative, community-building happenings.

Email us for a list of upcoming events!!

Follow on Instagram + Facebook: [@darren.monroe](#)

Inquire at: darren.monroe@yahoo.com

Darren M



THANK YOU

***TO OUR MCF TRUSTEES FOR YOUR DEDICATION
TO OUR MISSION AND MANY CONTRIBUTIONS!***



LEFT TO RIGHT: DANNY HERTZ, JERRY BUFFALINO, MARTY MCHUGH, MATT COHEN, HOLLY BOYLAN FLEGO, VALERIE MONTECALVO, DEREK DEBREE, AIDAN EHRENBERG, SARAH ORSAY, NORA KING, CHRIS MEAGHER, MICHAEL RUBIN, AND CINDY WEBER-CLEARY AT MCF'S INAUGURAL SUMMER BASH IN JULY 2023

RayCatena.com • 1-800-New-Auto

Proud to Support
**MONMOUTH CONSERVATION
FOUNDATION**



Mercedes-Benz of Edison
Mercedes-Benz of Union
Ray Catena of Freehold



Ray Catena Audi
Freehold



Ray Catena Lexus of Monmouth
Ray Catena Lexus of Freehold
Ray Catena Lexus of Larchmont
Ray Catena Lexus of White Plains

PORSCHE



JAGUAR



INFINITI

Ray Catena Porsche
in Edison

Land Rover Edison
Land Rover Marlboro

Ray Catena Jaguar of Edison
Ray Catena Jaguar Marlboro

Ray Catena INFINITI
of Bridgewater



Ray Catena BMW
of Westchester

SPRINTER

Ray Catena Sprinter Edison
Ray Catena Sprinter Union



Ray Catena MINI
of Westchester

JOIN US FOR OUR
30TH ANNIVERSARY
SEASON!

CONGRATULATIONS TO THE MONMOUTH CONSERVATION FOUNDATION FROM YOUR FRIENDS AT TWO RIVER THEATER



The company of *Twelfth Night*. Photo by T. Charles Erickson.

TWO —
RIVER
THEATER
30TH ANNIVERSARY

21 BRIDGE AVE, RED BANK | 732.345.1400 | TWRIVERTHEATER.ORG

MONMOUTH CONSERVATION FOUNDATION

“*The earth is what we all have in common.*”

— Wendell Berry



MCF Spring for Conservation Family Day 2023

PHOTOS BY MARCELLA SHOOK

Preserving open space for future generations

WWW.MONMOUTHCONSERVATION.ORG



@MONMOUTHCONSERVATIONFOUNDATION

